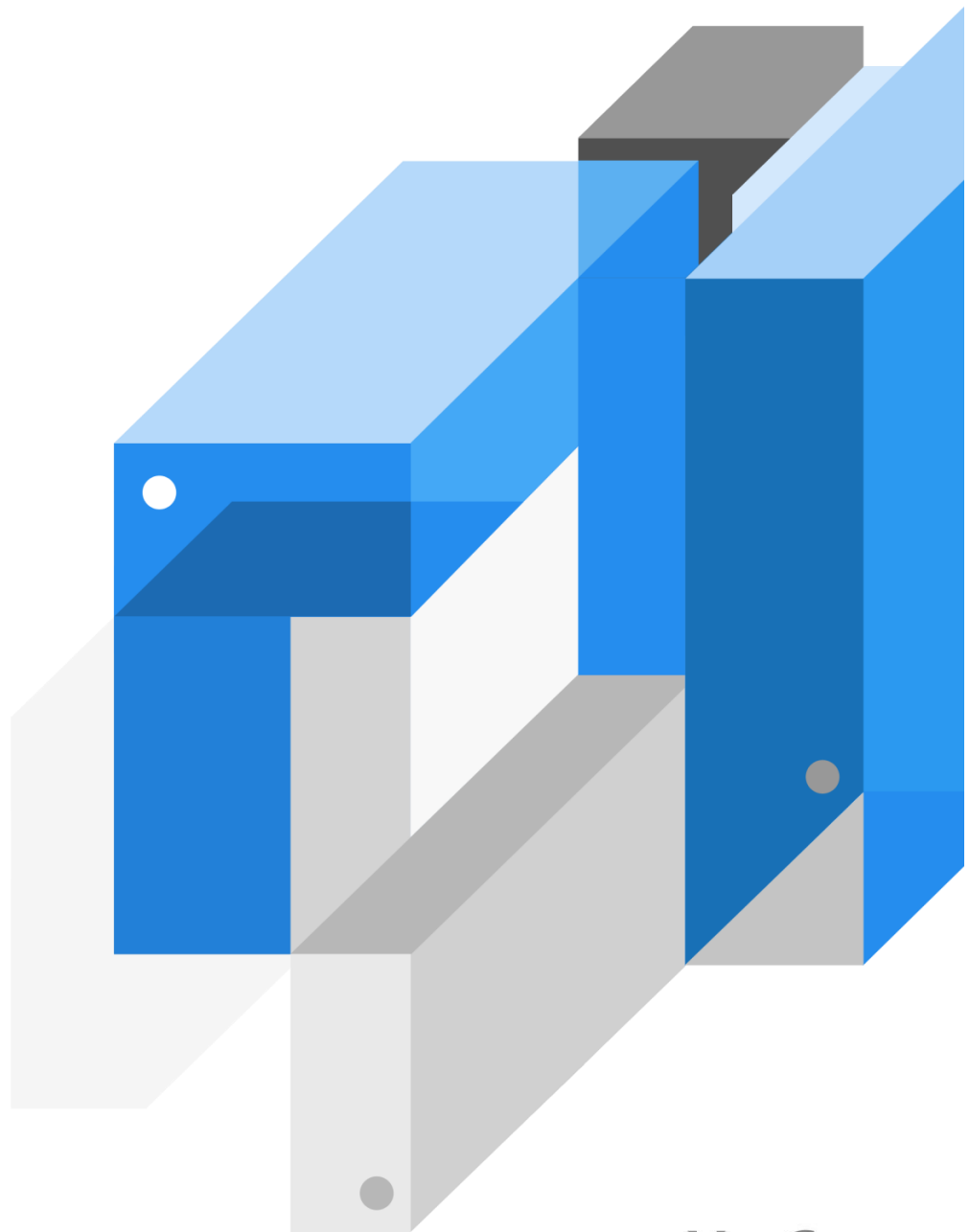


# MFM 4.2

## Install Guide



MaxGauge

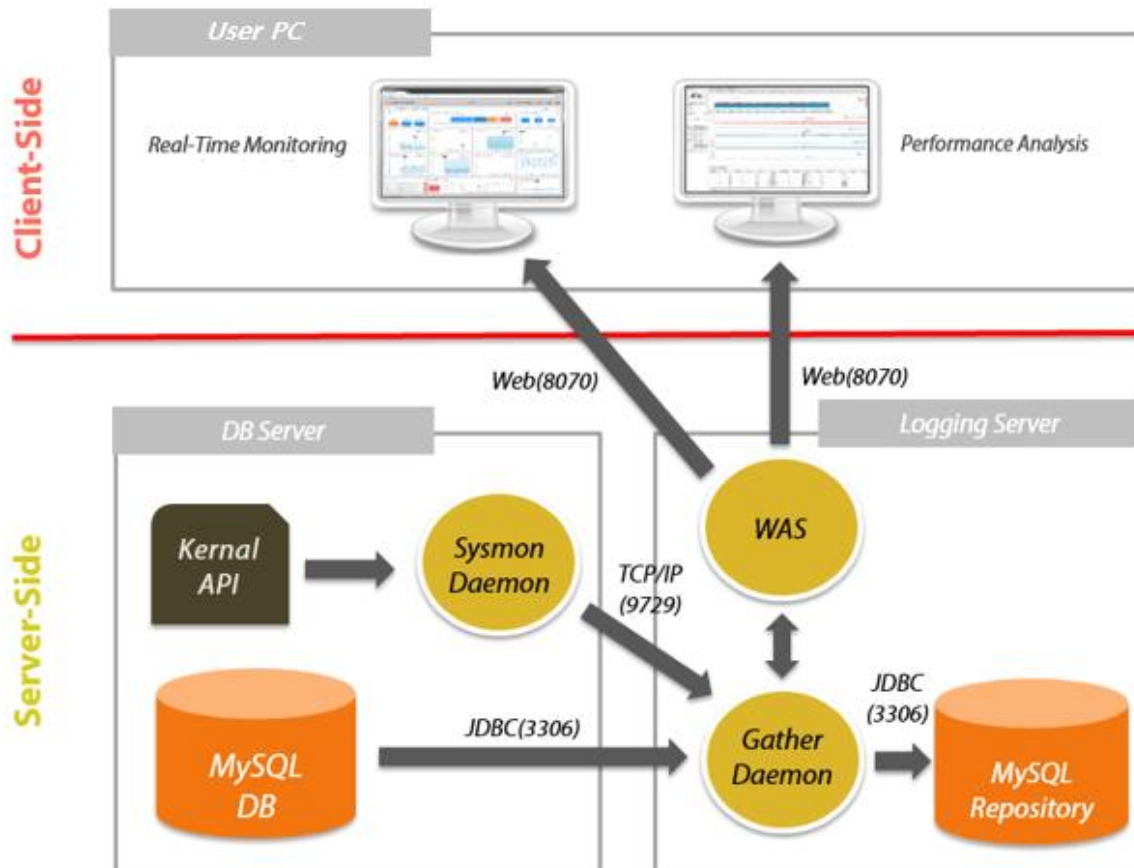
# Table of contents

1.System diagram .....	4
2. MaxGauge For MySQL Install Information .....	6
Install file information .....	6
Port information .....	6
Main Directory.....	6
Software Start/End.....	7
Start .....	7
Stop .....	7
3. MaxGauge for MySQL Installation .....	9
Pre-installation Preparations .....	9
MaxGauge for MySQL Installation Procedure .....	9
Monitoring Server .....	9
Logging Server.....	19
Window version.....	20
Linux Version.....	31

1

SYSTEM  
DIAGRAM

# 1. System diagram



# MAXGAUGE FOR MYSQL INSTALL INFORMATION

2. Maxgauge For MySQL Install Information .....	6
Install file information .....	6
Port information .....	6
Main Directory .....	6
Software Start/End .....	7
Start .....	7
Stop .....	7

## 2. MaxGauge for MySQL Install Information

### Install file information

File Name	Install Location
sysmon.maxgauge4mysql_20151202_sysmon_64bit.linux.tar	Monitoring Server
maxgauge4mysql.v4.2.151207.1822.install.WIN.zip	Logging Server
license.TRIAL_20160630.mfm.key	Logging Server

### Port information

Host	Default Port	Description
Real-time Monitor Communication	8070	Communication port between WAS/GAHTER and the Client
MySQL DB Communication	3306	Communication port between MySQL DB and WAS/GATHER
Daemon Communication	9729	Communication port between Daemon and WAS/GATHER

### Main Directory

Directory	Description	Install Location
Install Path/maxgauge/sysmon	MaxGauge Daemon Install Path	Monitoring Server
Install Path/maxgauge/sysmon/conf/instance01	MaxGauge Daemon Settings File Path	Monitoring Server
Install Path\maxgauge4mysql.v4.2.151207	MaxGauge WAS/GAHTER Settings Path	Logging Server

# Software Start/End

## Start

Command or Button	Results Check	Install Location
./sysmonlinux -d	Ps -ef   grep sysmon	Monitoring Server
./sysmonlinuObserver -d	Ps -ef   grep sysmon	Monitoring Server
Was start	Program Check OK	Logging Server
Controller start	Program Check OK	Logging Server

## Stop

Command or Button	Results Check	Install Location
Kill -9 SID Name	Ps -ef   grep sysmon	Monitoring Server
Was stop	Program Check OK	Logging Server
Controller stop	Program Check OK	Logging Server

# MAXGAUGE FOR MYSQL INSTALLATION

3. MaxGauge for MySQL Installation .....	9
Pre-installation Preparations .....	9
MaxGauge for MySQL Installation Procedure.....	9
Monitoring Server.....	9
Logging Server.....	19
Window version .....	20
Linux Version .....	311



## 3. MaxGauge for MySQL Installation

### Pre-installation Preparations

Job Name	Job Description
DB Server	<ul style="list-style-type: none"> <li>▪ Port Preparation : 9729 (Sysmon Communication Port)</li> <li>▪ DB Account : Maxgauge Data Collection DB Account Required. (Grant rights to select all tables)</li> <li>▪ Process Confirmation Request: MySQL Error, Slowquery Log Path Confirmation Request</li> </ul>
Logging PC (Repository DB)	<ul style="list-style-type: none"> <li>▪ Port Preparation : 8070 (WAS Driver Port / Web Server Connection) 8071 (WAS Stop Port) -Local Communications 8072 (Gather) -Local Communications 3306 (Monitoring Server Connection Port)</li> <li>▪ DB Account : Official Versions after MYSQL 5.6 Database, Table, Function, Procedure, View, and etc. Mostly Crud rights.</li> </ul>

### MaxGauge for MySQL Installation Procedure

#### Monitoring Server

Job Name	Job Description	Time Duration
Upload	Install File Upload	3 minutes
Create Directory	Create Install Path's Directory for MaxGauge	1 minute
Unzip Files	Unzip files (Tar)	1 minute
Daemon Execution	File execution to create environment configuration file.	2 minutes
Mysqld Path Check	MySQL Path Check Check with ps-ef   grep mysqld	3 minutes

Error log, data directory slow query Path Check	Check from <code>ps -ef   grep mysqld</code>	3 minutes
Port Check	<code>netstat -an   grep 9729</code> Port Check	1 minute
Environment Configuration	Enter the relevant information in the files <code>/maxgauge/sysmon/conf/instance01</code> <code>/maxgauge/sysmon/conf/mfm.conf</code>	3 minutes
Daemon Start	<code>./maxgauge/sysmon/bin/sysmonlinuxObserver -d</code>	

### Install File Upload

- `sysmon.maxgauge4mysql_20151202_sysmon_64bit.linux.tar` File Upload
- Upload file in the install location

### Create Directory to unzip Files

- Create Maxgauge For Mysql directory in the desired install location by the administrator:

Default : Directory location for installation/ maxgauge/ sysmon

- Create maxgauge directory in the desired install location by the administrator:

```
mkdir maxgauge
```

- Create sysmon directory inside the maxgauge directory.

```
cd maxgauge
```

```
mkdir sysmon
```

- Create bin, tmp directory inside the sysmon directory.

```
cd sysmon
```

```
mkdir bin
```

```
mkdir tmp
```

```

-rw----- 1 root root 16997 Jan  4 21:41 .viminfo
-rw-r--r-- 1 root root 12275 Mar 20 2015 dump.sql
drwxr-xr-x 2 root root 4096 Jan  5 12:48 tmp
root@qa-OptiPlex-7010:~#
root@qa-OptiPlex-7010:~#
root@qa-OptiPlex-7010:~# mkdir maxgauge
root@qa-OptiPlex-7010:~# cd maxgauge
root@qa-OptiPlex-7010:~/maxgauge# mkdir sysmon
root@qa-OptiPlex-7010:~/maxgauge# ls -la
total 12
drwxr-xr-x 3 root root 4096 Jan  5 12:48 .
drwx----- 11 root root 4096 Jan  5 12:48 ..
drwxr-xr-x 2 root root 4096 Jan  5 12:48 sysmon
root@qa-OptiPlex-7010:~/maxgauge# cd sysmon
root@qa-OptiPlex-7010:~/maxgauge/sysmon# mkdir bin
root@qa-OptiPlex-7010:~/maxgauge/sysmon# mkdir tmp
root@qa-OptiPlex-7010:~/maxgauge/sysmon# ls -la
total 16
drwxr-xr-x 4 root root 4096 Jan  5 12:49 .
drwxr-xr-x 3 root root 4096 Jan  5 12:48 ..
drwxr-xr-x 2 root root 4096 Jan  5 12:49 bin
drwxr-xr-x 2 root root 4096 Jan  5 12:49 tmp
root@qa-OptiPlex-7010:~/maxgauge/sysmon#
root@qa-OptiPlex-7010:~/maxgauge/sysmon#

```

**Move the upload files into the install path /maxgauge/sysmon/bin-directory, and unzip files.**

- Move the uploaded files to Install Path/maxgauge/ sysmon/bin/

```
mv sysmon.maxgauge4mysql_20151202_sysmon_64bit.linux.tar Install Path/maxgauge/sysmon/bin/
```

- -Unzip

```
tar xvf sysmon.maxgauge4mysql_20151202_sysmon_64bit.linux.tar
```

```

-rw-r--r-- 1 root root 12275 Mar 20 2015 dump.sql
drwxr-xr-x 3 root root 4096 Jan  5 12:48 maxgauge
-rw-r--r-- 1 root root 252477 Jan  5 12:46 sysmon.maxgauge4mysql_20151202_sysmon_64bit.linux.tar
root@qa-OptiPlex-7010:~# mv sysmon.maxgauge4mysql_20151202_sysmon_64bit.linux.tar maxgauge/sysmon/bin/
root@qa-OptiPlex-7010:~# cd maxgauge/sysmon/bin/
root@qa-OptiPlex-7010:~/maxgauge/sysmon/bin# ls -la
total 256
drwxr-xr-x 2 root root 4096 Jan  5 12:50 .
drwxr-xr-x 4 root root 4096 Jan  5 12:49 ..
-rw-r--r-- 1 root root 252477 Jan  5 12:46 sysmon.maxgauge4mysql_20151202_sysmon_64bit.linux.tar
root@qa-OptiPlex-7010:~/maxgauge/sysmon/bin# tar xvf sysmon.maxgauge4mysql_20151202_sysmon_64bit.linux.tar
lib.fnc
main.sh
stdout.fnc
sysmonlinux
sysmonlinuxObserver
readme.log.conf
root@qa-OptiPlex-7010:~/maxgauge/sysmon/bin# ls -la
total 900
drwxr-xr-x 2 root root 4096 Jan  5 12:51 .
drwxr-xr-x 4 root root 4096 Jan  5 12:49 ..
-rw-r--r-- 1 501 501 678 Dec  2 10:01 lib.fnc
-rwxr-xr-x 1 501 501 3158 Dec  2 10:01 main.sh
-rw----- 1 root root 244 Dec  2 10:01 readme.log.conf
-rw-r--r-- 1 501 501 6496 Dec  2 10:01 stdout.fnc
-rw-r--r-- 1 root root 252477 Jan  5 12:46 sysmon.maxgauge4mysql_20151202_sysmon_64bit.linux.tar
-rwxr-xr-x 1 root root 588951 Dec  2 10:01 sysmonlinux
-rwxr-xr-x 1 root root 46953 Dec  2 10:01 sysmonlinuxObserver
root@qa-OptiPlex-7010:~/maxgauge/sysmon/bin#
root@qa-OptiPlex-7010:~/maxgauge/sysmon/bin#

```

**Move the zip files to the directory maxgauge/ sysmon/tmp which was created in 2) above.**

- Move the zip files to tmp location created in 2) so that version can be checked afterwards.

```
mv sysmon.maxgauge4mysql_20151202_sysmon_64bit.linux.tar Install Location/maxgauge/sysmon/tmp
```

Or

```
mv sysmon.maxgauge4mysql_20151202_sysmon_64bit.linux.tar ./tmp
```

```
root@qa-OptiPlex-7010:~/maxgauge/sysmon/bin# ls -la
total 900
drwxr-xr-x 2 root root 4096 Jan 5 12:51 .
drwxr-xr-x 4 root root 4096 Jan 5 12:49 ..
-rw-r--r-- 1 501 501 678 Dec 2 10:01 lib.fnc
-rwxr-xr-x 1 501 501 3158 Dec 2 10:01 main.sh
-rw----- 1 root root 244 Dec 2 10:01 readme.log.conf
-rw-r--r-- 1 501 501 6496 Dec 2 10:01 stdout.fnc
-rw-r--r-- 1 root root 252477 Jan 5 12:46 sysmon.maxgauge4mysql_20151202_sysmon_64bit.linux.tar
-rwxr-xr-x 1 root root 588951 Dec 2 10:01 sysmonlinux
-rwxr-xr-x 1 root root 46953 Dec 2 10:01 sysmonlinuxObserver
root@qa-OptiPlex-7010:~/maxgauge/sysmon/bin#
root@qa-OptiPlex-7010:~/maxgauge/sysmon/bin#
root@qa-OptiPlex-7010:~/maxgauge/sysmon/bin# mv sysmon.maxgauge4mysql_20151202_sysmon_64bit.linux.tar ./tmp
root@qa-OptiPlex-7010:~/maxgauge/sysmon/bin# cd ../tmp
root@qa-OptiPlex-7010:~/maxgauge/sysmon/tmp# ls -la
total 256
drwxr-xr-x 2 root root 4096 Jan 5 12:53 .
drwxr-xr-x 4 root root 4096 Jan 5 12:49 ..
-rw-r--r-- 1 root root 252477 Jan 5 12:46 sysmon.maxgauge4mysql_20151202_sysmon_64bit.linux.tar
root@qa-OptiPlex-7010:~/maxgauge/sysmon/tmp#
root@qa-OptiPlex-7010:~/maxgauge/sysmon/tmp#
```

**To create environment configuration file, run sysmonlinux in the sysmon/bin folder and then quit**

- Go to Install Location/maxgauge/sysmon/bin

```
cd Install Location/maxgauge/sysmon/bin
```

- Start sysmon daemon to create environment configuration file.

```
./sysmonlinux -d
```

- Go to Install Location/maxgauge/sysmon and check whether the conf, log directories have been created.

```
cd Install Location/maxgauge/sysmon/
```

```

root@qa-OptiPlex-7010:~/maxgauge/sysmon/bin# ls -la
total 652
drwxr-xr-x 2 root root 4096 Jan 5 12:53 .
drwxr-xr-x 4 root root 4096 Jan 5 12:49 ..
-rw-r--r-- 1 501 501 678 Dec 2 10:01 lib.fnc
-rwxr-xr-x 1 501 501 3158 Dec 2 10:01 main.sh
-rw----- 1 root root 244 Dec 2 10:01 readme.log.conf
-rw-r--r-- 1 501 501 6496 Dec 2 10:01 stdout.fnc
-rwxr-xr-x 1 root root 588951 Dec 2 10:01 sysmonlinux
-rwxr-xr-x 1 root root 46953 Dec 2 10:01 sysmonlinuxObserver
root@qa-OptiPlex-7010:~/maxgauge/sysmon/bin# ./sysmonlinux -d
root@qa-OptiPlex-7010:~/maxgauge/sysmon/bin#
root@qa-OptiPlex-7010:~/maxgauge/sysmon/bin# cd ..
root@qa-OptiPlex-7010:~/maxgauge/sysmon# ls -la
total 24
drwxr-xr-x 6 root root 4096 Jan 5 12:54 .
drwxr-xr-x 3 root root 4096 Jan 5 12:48 ..
drwxr-xr-x 2 root root 4096 Jan 5 12:53 bin
drwxr-xr-x 2 root root 4096 Jan 5 12:54 conf
drwxr-xr-x 2 root root 4096 Jan 5 12:54 log
drwxr-xr-x 2 root root 4096 Jan 5 12:53 tmp
root@qa-OptiPlex-7010:~/maxgauge/sysmon#
root@qa-OptiPlex-7010:~/maxgauge/sysmon#

```

## Daemon kill

- Kill because it is a daemon (sysmon) which has not created an environment configuration.
- Check sysmon's SID value

```
ps -ef | grep sysmon
```

- `kill`

```
kill -9 SID Name
```

- Check if it has been terminated successfully.

```
ps -ef | grep sysmon
```

```

root@qa-OptiPlex-7010:~/maxgauge/sysmon#
root@qa-OptiPlex-7010:~/maxgauge/sysmon#
root@qa-OptiPlex-7010:~/maxgauge/sysmon# ls -la
total 24
drwxr-xr-x 6 root root 4096 Jan 5 12:54 .
drwxr-xr-x 3 root root 4096 Jan 5 12:48 ..
drwxr-xr-x 2 root root 4096 Jan 5 12:53 bin
drwxr-xr-x 2 root root 4096 Jan 5 12:54 conf
drwxr-xr-x 2 root root 4096 Jan 5 12:54 log
drwxr-xr-x 2 root root 4096 Jan 5 12:53 tmp
root@qa-OptiPlex-7010:~/maxgauge/sysmon# ps -ef | grep sysmon
root 7462 1 2 12:56 ? 00:00:00 ./sysmonlinux -d
root 7477 5165 0 12:56 pts/2 00:00:00 grep --color=auto sysmon
root@qa-OptiPlex-7010:~/maxgauge/sysmon# kill -9 7462
root@qa-OptiPlex-7010:~/maxgauge/sysmon# ps -ef | grep sysmon
root 7483 5165 0 12:57 pts/2 00:00:00 grep --color=auto sysmon
root@qa-OptiPlex-7010:~/maxgauge/sysmon#
root@qa-OptiPlex-7010:~/maxgauge/sysmon#

```

## Port Check

- Sysmon Communication Port Check

```
netstat -an |grep 9729
```

```
root@qa-OptiPlex-7010:~/maxgauge/sysmon#
root@qa-OptiPlex-7010:~/maxgauge/sysmon# ps -ef|grep sysmon
root      8157   5165   0 13:00 pts/2    00:00:00 grep  --color=auto sysmon
root@qa-OptiPlex-7010:~/maxgauge/sysmon#
root@qa-OptiPlex-7010:~/maxgauge/sysmon# netstat -an |grep 9729
root@qa-OptiPlex-7010:~/maxgauge/sysmon#
root@qa-OptiPlex-7010:~/maxgauge/sysmon#
root@qa-OptiPlex-7010:~/maxgauge/sysmon#
```

## Mysqld path and port check

- Check MySQL environment configuration values and the port

```
ps -ef| grep mysqld
```

- Copy the corresponding path

```
root@qa-OptiPlex-7010:~/maxgauge/sysmon#
root@qa-OptiPlex-7010:~/maxgauge/sysmon#
root@qa-OptiPlex-7010:~/maxgauge/sysmon# ps -ef|grep mysqld
root      1048     1   0 2015 ?        00:00:00 /bin/sh /usr/bin/mysqld safe
root      8162   5165   0 13:00 pts/2    00:00:00 grep  --color=auto mysqld
mysql     28211  1048   6 2015 ?        1-06:42:43 /usr/sbin/mysqld --basedir=/usr --datadir=/var/lib/mysql --p
ugin-dir=/usr/lib/mysql/plugin --user=mysql --log-error=/var/log/mysql/error.log --pid-file=/var/run/mysqld/m
ysqld.pid --socket=/var/run/mysqld/mysqld.sock --port=3306
root@qa-OptiPlex-7010:~/maxgauge/sysmon#
root@qa-OptiPlex-7010:~/maxgauge/sysmon#
```

## Identify error log/ data directory / slow query path

- Check log error location in Mysql environment configuration values

```
ps -ef | grep mysqld
```

- Check Log Error location

```
root@qa-OptiPlex-7010:~/maxgauge/sysmon#
root@qa-OptiPlex-7010:~/maxgauge/sysmon#
root@qa-OptiPlex-7010:~/maxgauge/sysmon# ps -ef|grep mysqld
root      1048     1   0 2015 ?        00:00:00 /bin/sh /usr/bin/mysqld safe
root      8162   5165   0 13:00 pts/2    00:00:00 grep  --color=auto mysqld
mysql     28211  1048   6 2015 ?        1-06:42:43 /usr/sbin/mysqld --basedir=/usr --datadir=/var/lib/mysql --p
ugin-dir=/usr/lib/mysql/plugin --user=mysql --log-error=/var/log/mysql/error.log --pid-file=/var/run/mysqld/m
ysqld.pid --socket=/var/run/mysqld/mysqld.sock --port=3306
root@qa-OptiPlex-7010:~/maxgauge/sysmon#
root@qa-OptiPlex-7010:~/maxgauge/sysmon#
```

- Check Data directory location

```

root@qa-OptiPlex-7010:~/maxgauge/sysmon#
root@qa-OptiPlex-7010:~/maxgauge/sysmon#
root@qa-OptiPlex-7010:~/maxgauge/sysmon# ps -ef|grep mysqld
root      1048      1   0   2015 ?        00:00:00 /bin/sh /usr/bin/mysqld_safe
root      8162    5165   0  13:00 pts/2    00:00:00 grep --color=auto mysqld
mysql    28211    1048   6  2015 ?        1-06:42:43 /usr/sbin/mysqld --basedir=/usr --datadir=/var/lib/mysql --p
login-dir=/usr/lib/mysql/plugin --user=mysql --log-error=/var/log/mysql/error.log --pid-file=/var/run/mysqld/m
ysqld.pid --socket=/var/run/mysqld/mysqld.sock --port=3306
root@qa-OptiPlex-7010:~/maxgauge/sysmon#
root@qa-OptiPlex-7010:~/maxgauge/sysmon#

```

### Enter relevant MySQL environment path in the install location/ maxgauge/ sysmon/ conf/ instance01

- Go to Install Location/maxgauge/sysmon/conf

```
cd Install Location/maxgauge/sysmon/conf
```

- Enter corresponding path in instance01

```
vi instance01
```

```

root@qa-OptiPlex-7010:~/maxgauge/sysmon# ls -la
total 24
drwxr-xr-x 6 root root 4096 Jan  5 12:54 .
drwxr-xr-x 3 root root 4096 Jan  5 12:48 ..
drwxr-xr-x 2 root root 4096 Jan  5 12:53 bin
drwxr-xr-x 2 root root 4096 Jan  5 12:54 conf
drwxr-xr-x 2 root root 4096 Jan  5 12:54 log
drwxr-xr-x 2 root root 4096 Jan  5 12:53 tmp
root@qa-OptiPlex-7010:~/maxgauge/sysmon# cd conf
root@qa-OptiPlex-7010:~/maxgauge/sysmon/conf# ls -la
total 16
drwxr-xr-x 2 root root 4096 Jan  5 12:54 .
drwxr-xr-x 6 root root 4096 Jan  5 12:54 ..
-rw-r--r-- 1 root root 1792 Jan  5 12:54 instance01
-rw-r--r-- 1 root root  630 Jan  5 12:54 mfm.conf
root@qa-OptiPlex-7010:~/maxgauge/sysmon/conf#
root@qa-OptiPlex-7010:~/maxgauge/sysmon/conf#

```

### Instance 01

- PORT : Enter MySQL Port
- PATH : Enter MySQL Path (In case you do not find the corresponding MySQL with the PORT above, use PATH to connect.)
- DATA\_PATH : Enter Data Path (ps -ef |grep mysqld's data dir)
- ERROR : Enter ERROR LOG Path (ps -ef | grep mysqld's log-error)
- SLOWQUERY : Enter SLOWQUERY Path (Check the corresponding path and enter.)

```

[INSTANCE1]
PORT=3306
PATH=/usr/sbin/mysqld --basedir=/usr --datadir=/var/lib/mysql --plugin-dir=/usr/lib/mysql/plugin --user=mysql
--log-error=/var/log/mysql/error.log --pid-file=/var/run/mysqld/mysqld.pid --socket=/var/run/mysqld/mysqld.sock
--port=3306

[MYSOCDATA]
DATA_PATH=/var/lib/mysql
#exclude from database - delimiter is ;
EXCLUDE_DATA=performance_schema;mysql;status;sys

[MYSQLLOG]
#Error log file path - delimiter is ;
ERROR=/var/log/mysql/error.log
#Slow Query file path
SLOWQUERY=/var/log/mysql/mysql-slow.log
#Format string
# %a Abbreviated weekday name (ex. Thu)
# %A Full weekday name (ex. Thursday)
# %b Abbreviated month name (ex. Aug)
# %B Full month name (ex. August)
# %c Date and time representation (ex. Thu Aug 23 14:55:02 2001)
# %C The century number (0-99).
# %d or %e dya (1~31)
# %D Equivalent to %m/%d/%y. (This is the American style date, very confusing to non-Americans, especially
y since %d/%m/%y is widely used in Europe.
# The ISO 8601 standard format is %Y-%m-%d.)
# %H hour (0~23)
# %I hour (1~12)
# %j day (1~366)
# %m month (1~12)
# %M minute (0~59)
# %p AM or PM
# %r The 12-hour clock time (%I:%M:%S %p)
# %R Equivalent to %H:%M.
# %S 0-60; 60 may occur for leap seconds; earlier also 61 was allowed.
# %T Equivalent to %H:%M:%S.
# %u ISO 8601 weekday as number with Monday as 1 (1~7)

```

### Enter Port in Install Location /maxgauge/ sysmon/ conf/ mfm.conf

- Enter Sysmon communication port in the mfm.conf

vi mfm.conf

- Run mfm.conf values in Default status.

### mfm.conf

- PORT : Enter Sysmon Port
- LEVEL : Consol (Screen Output):0, Packet:1(Request Response log file storage), Process:2(Collection Data log file storage)
- INTERVAL : Log transmission check cycle (seconds)
- LIMIT\_MEM : Collection limit memory (MB) – When each log exceeds the limit, the existing collected log will be deleted.
- LIMIT\_TRANS : Size Limit Per Transmission (KB) – May vary depending on the network situation.
- FILES : Enter SysLog Path
- ALIAS : Instance nickname and separate by ; when entering.

When there are several MySQLs in a server, then enter more names.



```
[SERVER]
#Listening port
PORT=9729
#LOG LEVEL 0~2
LEVEL=0

[OBSERVER]
#check cycle(sec)
INTERVAL=1
#CPU limit ratio(%)
CPULIMIT=10
#Memory limit size(MB)
MEMLIMIT=500

[LOG]
#check cycle(sec)
INTERVAL=2
#Limit memory(MB)
LIMIT_MEM=5
#Limit packet transfer size(KB)
LIMIT_TRANS=100

[SYSLOG]
#Log files of path - delimiter is ;
#FILES=/var/log/syslog;/var/log/auth.log
#FILES=/var/log/message;/var/log/secure
FILES=/var/log/syslog;/var/log/auth.log;
[MYSQL]
#Instance alias - delimiter is ;
ALIAS=instance01

[SHELL]
#code by shell command
#maximum limit count 100.
COUNT=0
000=
001=
002=
003=
```

## Debug File

- Rename Debug file

```
mv readme.log.conf log.conf
```

- Move Debug file

```
mv log.conf Install Path/maxgauge/sysmon/conf/
```

or

```
mv log.conf ../conf
```

```

drwxr-xr-x 6 root root 4096 Jan 5 12:54 ..
-rw-r--r-- 1 501 501 678 Dec 2 10:01 lib.fnc
-rwxr-xr-x 1 501 501 3158 Dec 2 10:01 main.sh
-rw----- 1 root root 244 Dec 2 10:01 readme.log.conf
-rw-r--r-- 1 501 501 6496 Dec 2 10:01 stdout.fnc
-rwxr-xr-x 1 root root 588951 Dec 2 10:01 sysmonlinux
-rwxr-xr-x 1 root root 46953 Dec 2 10:01 sysmonlinuxObserver
root@qa-OptiPlex-7010:~/maxgauge/sysmon/bin# mv readme.log.conf log.conf
root@qa-OptiPlex-7010:~/maxgauge/sysmon/bin# ls -la
total 652
drwxr-xr-x 2 root root 4096 Jan 5 13:17 .
drwxr-xr-x 6 root root 4096 Jan 5 12:54 ..
-rw-r--r-- 1 501 501 678 Dec 2 10:01 lib.fnc
-rw----- 1 root root 244 Dec 2 10:01 log.conf
-rwxr-xr-x 1 501 501 3158 Dec 2 10:01 main.sh
-rw-r--r-- 1 501 501 6496 Dec 2 10:01 stdout.fnc
-rwxr-xr-x 1 root root 588951 Dec 2 10:01 sysmonlinux
-rwxr-xr-x 1 root root 46953 Dec 2 10:01 sysmonlinuxObserver
root@qa-OptiPlex-7010:~/maxgauge/sysmon/bin# mv log.conf ../conf
root@qa-OptiPlex-7010:~/maxgauge/sysmon/bin# ls -la
total 648
drwxr-xr-x 2 root root 4096 Jan 5 13:17 .
drwxr-xr-x 6 root root 4096 Jan 5 12:54 ..
-rw-r--r-- 1 501 501 678 Dec 2 10:01 lib.fnc
-rwxr-xr-x 1 501 501 3158 Dec 2 10:01 main.sh
-rw-r--r-- 1 501 501 6496 Dec 2 10:01 stdout.fnc
-rwxr-xr-x 1 root root 588951 Dec 2 10:01 sysmonlinux
-rwxr-xr-x 1 root root 46953 Dec 2 10:01 sysmonlinuxObserver
root@qa-OptiPlex-7010:~/maxgauge/sysmon/bin# cd ..
root@qa-OptiPlex-7010:~/maxgauge/sysmon# cd conf
root@qa-OptiPlex-7010:~/maxgauge/sysmon/conf# ls -la
total 20
drwxr-xr-x 2 root root 4096 Jan 5 13:17 .
drwxr-xr-x 6 root root 4096 Jan 5 12:54 ..
-rw-r--r-- 1 root root 2006 Jan 5 13:08 instance01
-rw----- 1 root root 244 Dec 2 10:01 log.conf
-rw-r--r-- 1 root root 630 Jan 5 12:54 mfm.conf

```

## Daemon Activation

- Go to Install Location/maxgauge/sysmon/bin

```
cd Install Location/maxgauge/sysmon/bin
```

- Activate sysmon Observer

```
/sysmonlinuxObserver -d
```

- Once the sysmon Observer is activated, sysmon daemon is automatically activated.
- -Check whether it has been activated successfully.

```
ps -ef | grep sysmon
```

```

root@qa-OptiPlex-7010:~/maxgauge/sysmon/bin#
root@qa-OptiPlex-7010:~/maxgauge/sysmon/bin# cd ..
root@qa-OptiPlex-7010:~/maxgauge/sysmon# cd bin
root@qa-OptiPlex-7010:~/maxgauge/sysmon/bin# ls -la
total 652
drwxr-xr-x 2 root root 4096 Jan 5 13:25 .
drwxr-xr-x 6 root root 4096 Jan 5 12:54 ..
-rw-r--r-- 1 501 501 678 Dec 2 10:01 lib.fnc
-rw-r--r-- 1 root root 159 Jan 5 13:26 lpos.dat
-rwxr-xr-x 1 501 501 3158 Dec 2 10:01 main.sh
-rw-r--r-- 1 501 501 6496 Dec 2 10:01 stdout.fnc
-rwxr-xr-x 1 root root 588951 Dec 2 10:01 sysmonlinux
-rwxr-xr-x 1 root root 46953 Dec 2 10:01 sysmonlinuxObserver
root@qa-OptiPlex-7010:~/maxgauge/sysmon/bin# ./sysmonlinuxObserver -D
root@qa-OptiPlex-7010:~/maxgauge/sysmon/bin# ps -ef|grep sysmon
root 9039 1 0 13:26 ? 00:00:00 ./sysmonlinuxObserver -D
root 9045 1 3 13:26 ? 00:00:00 /root/maxgauge/sysmon/bin/sysmonlinux -d
root 9064 5165 0 13:26 pts/2 00:00:00 grep --color=auto sysmon
root@qa-OptiPlex-7010:~/maxgauge/sysmon/bin#
root@qa-OptiPlex-7010:~/maxgauge/sysmon/bin#
root@qa-OptiPlex-7010:~/maxgauge/sysmon/bin#

```

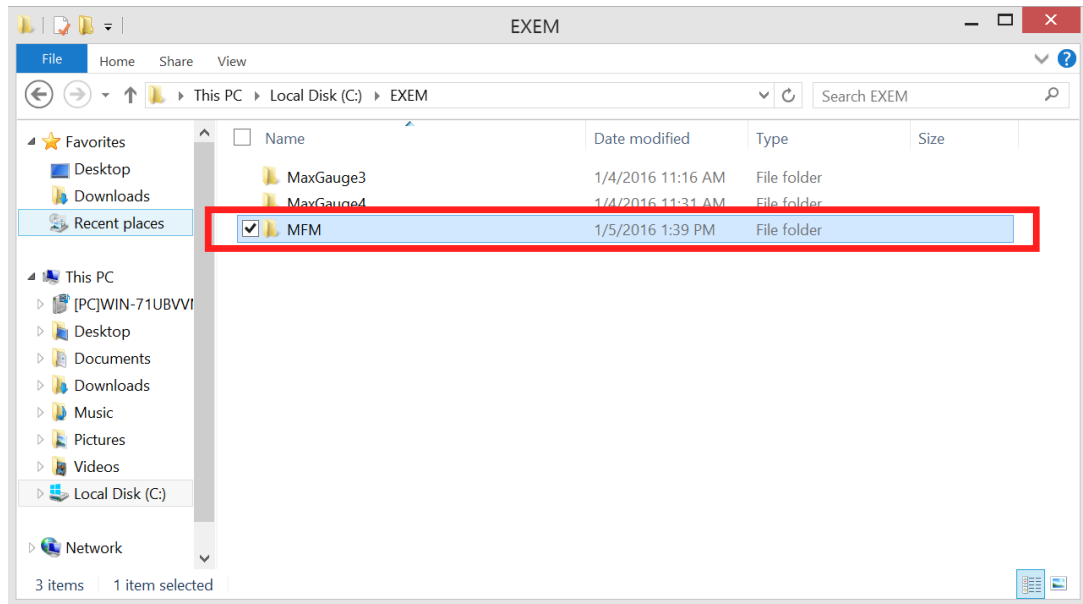
## Logging Server

Job Name	Job Description	Time Duration
Upload	Install File Upload	3 minutes
Create Directory	Create intall path's directory for Maxgauge.	1 minute
Unzip Files	Unzip files. (TAR or ZIP)	1 minute
License Registration	License registration	2 minutes
Agent Execution	Agent (Was, Gather Configuration File) Execution	3 minutes
Environment Configuration	Enter Logging pc MySQL information Enter WAS, Gather Port (default : 8070 8071) Enter Create DB name for Maxgauge Enter MySQL login account for Maxgauge	5 minutes
Connection Success Test	Click the 'Connect test' button and confirm success.	1 minute
Create Procedure and Tables	Click the 'Create Repository DDL' button, and the required procedure and tables will be automatically created.	2 minutes
ent Activation	Execute Menu>Process > All Start.	1 minute

## Window version

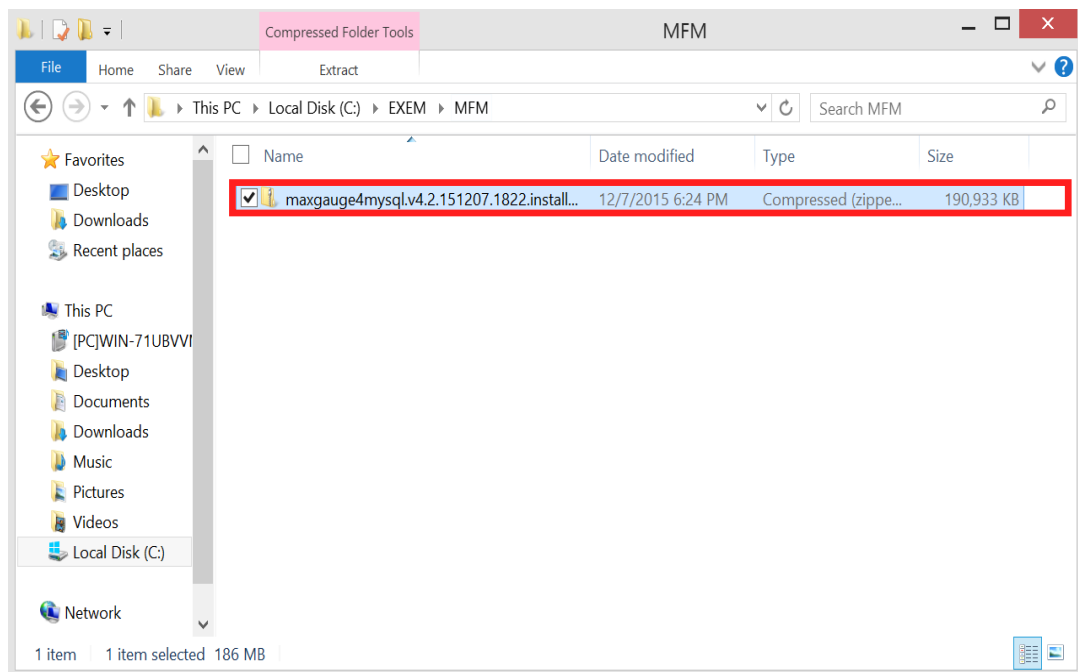
### Create Directory

- Create Directory for Maxgauge in the install location.



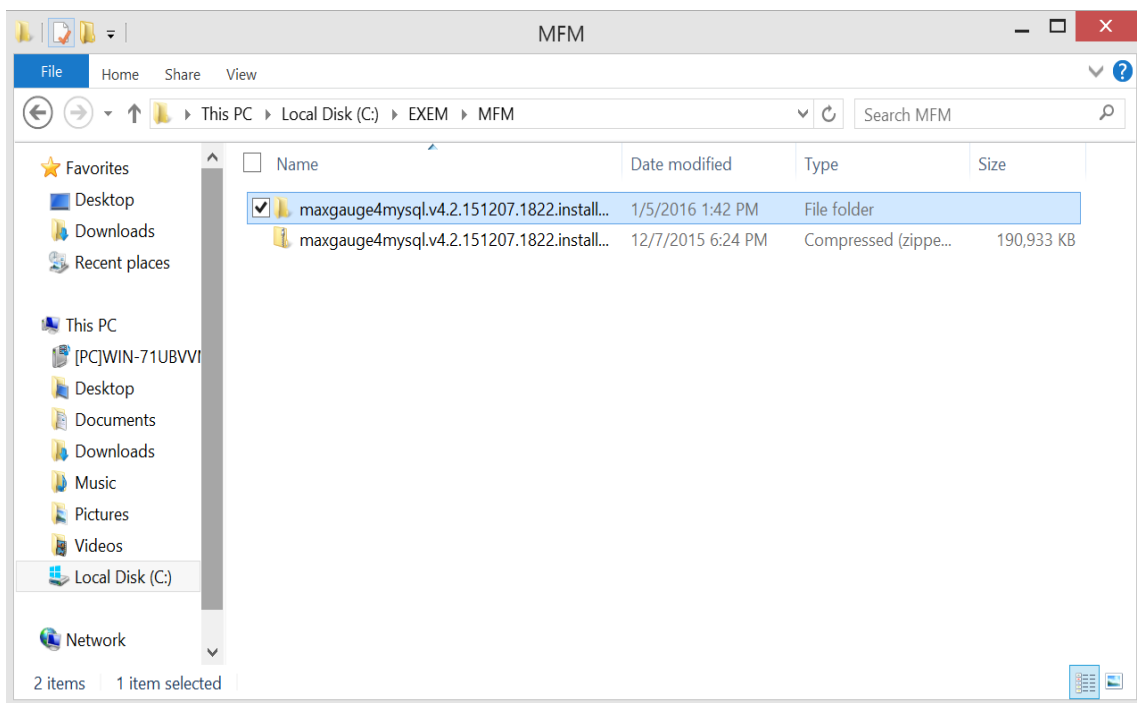
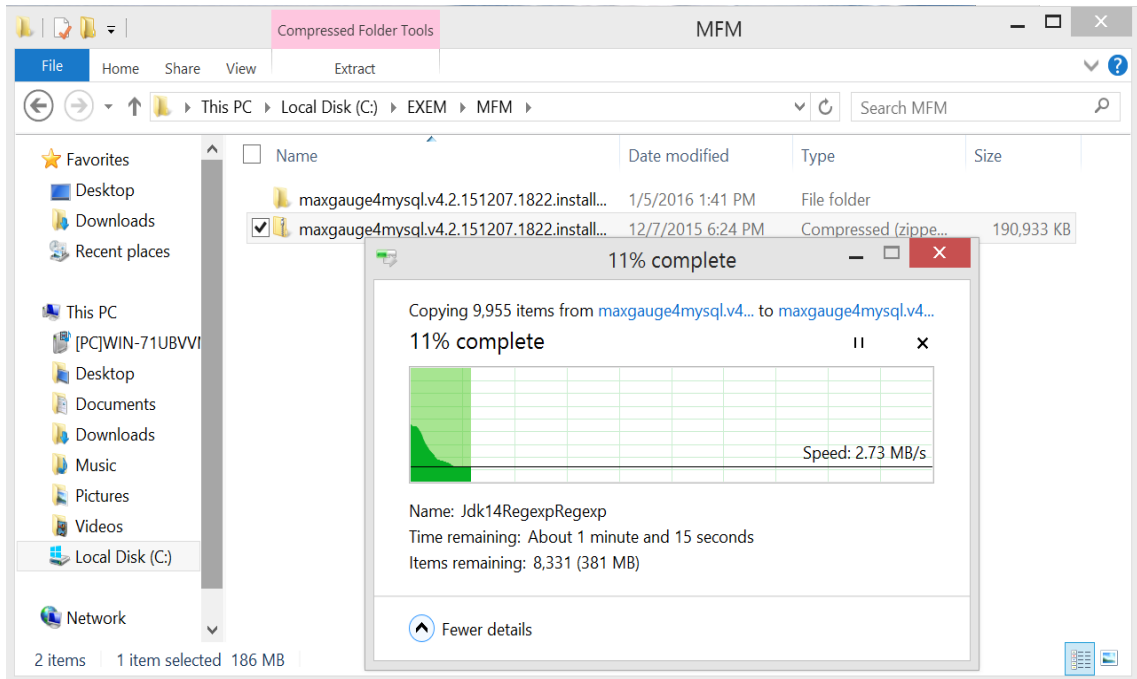
### Install file upload

- Upload the file maxgauge4mysql.v4.2.151207.1822.install.WIN
- Upload the file in the install location



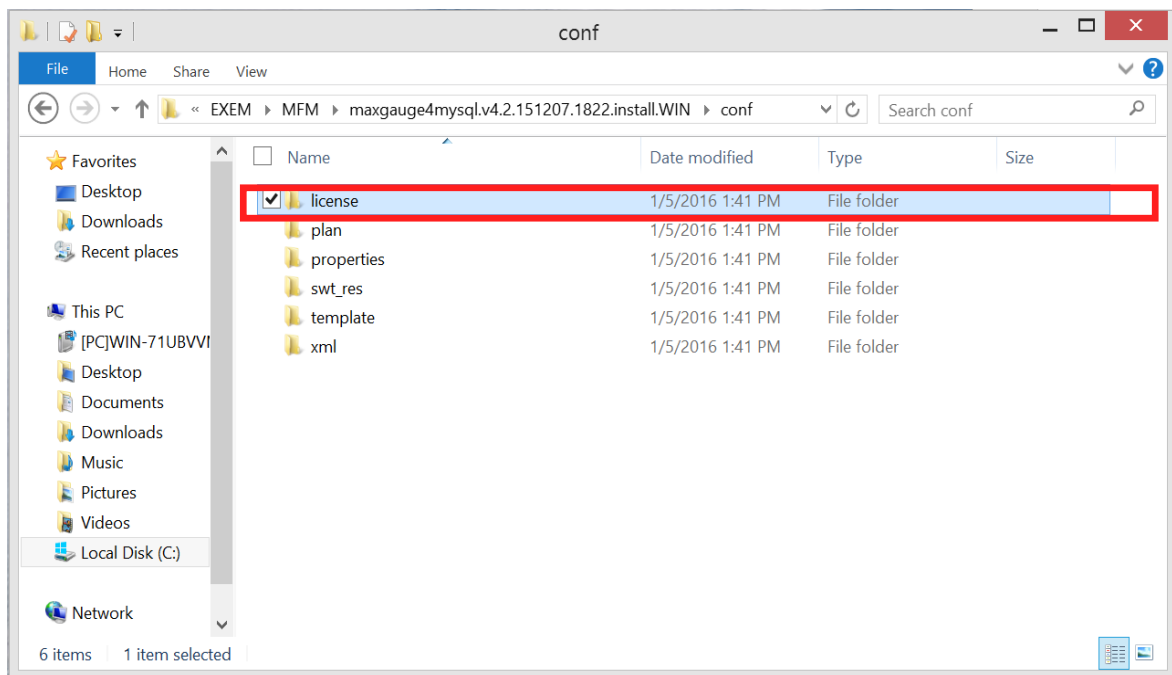
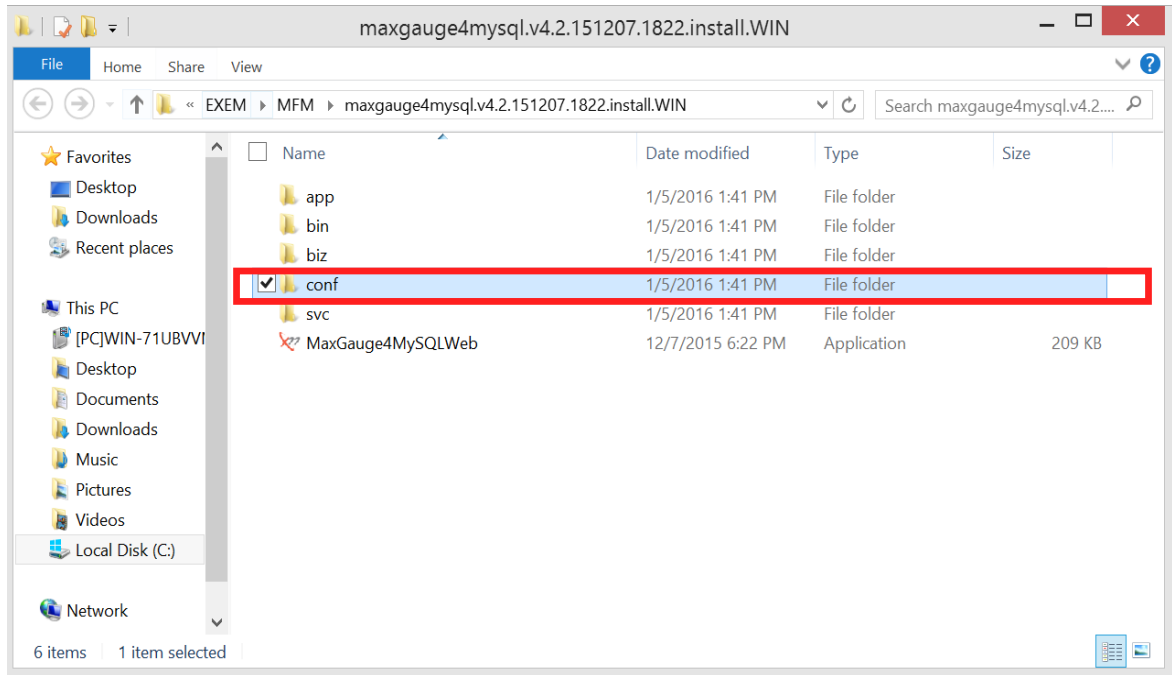
## Unzip File

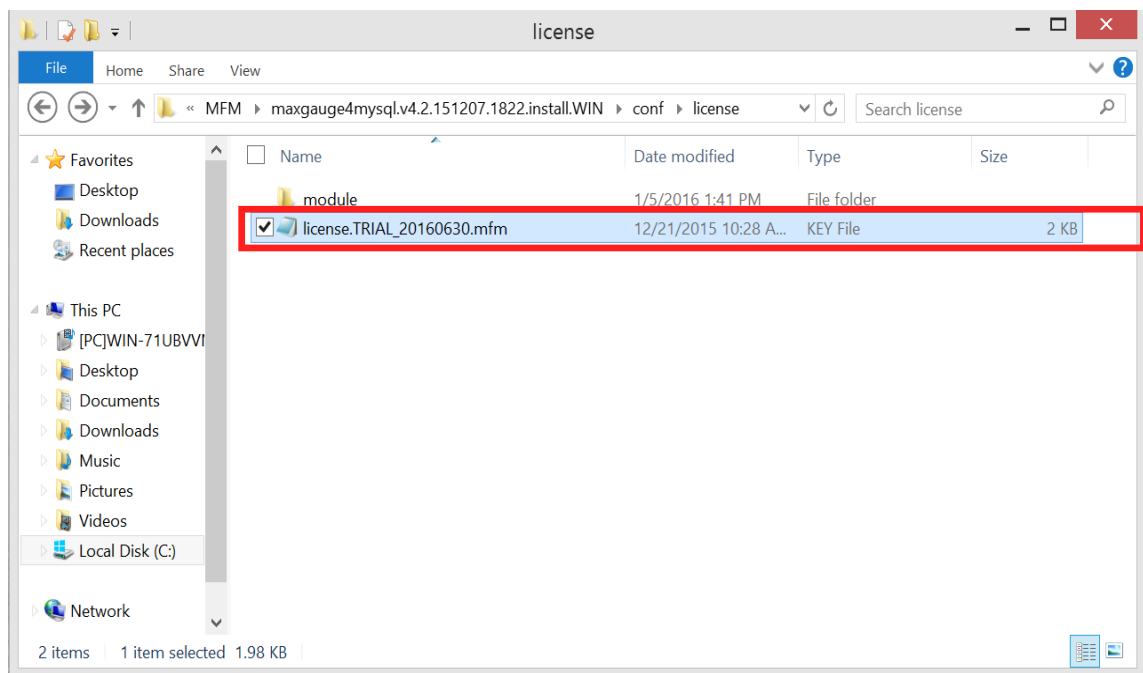
- Unzip the file maxgauge4mysql.v4.2.151207.1822.install.WIN
- Check to make sure the unzipped folder contains the app, bin, biz, conf, svc, execution file (MaxGauge4MySQLWeb.exe).



## Insert license

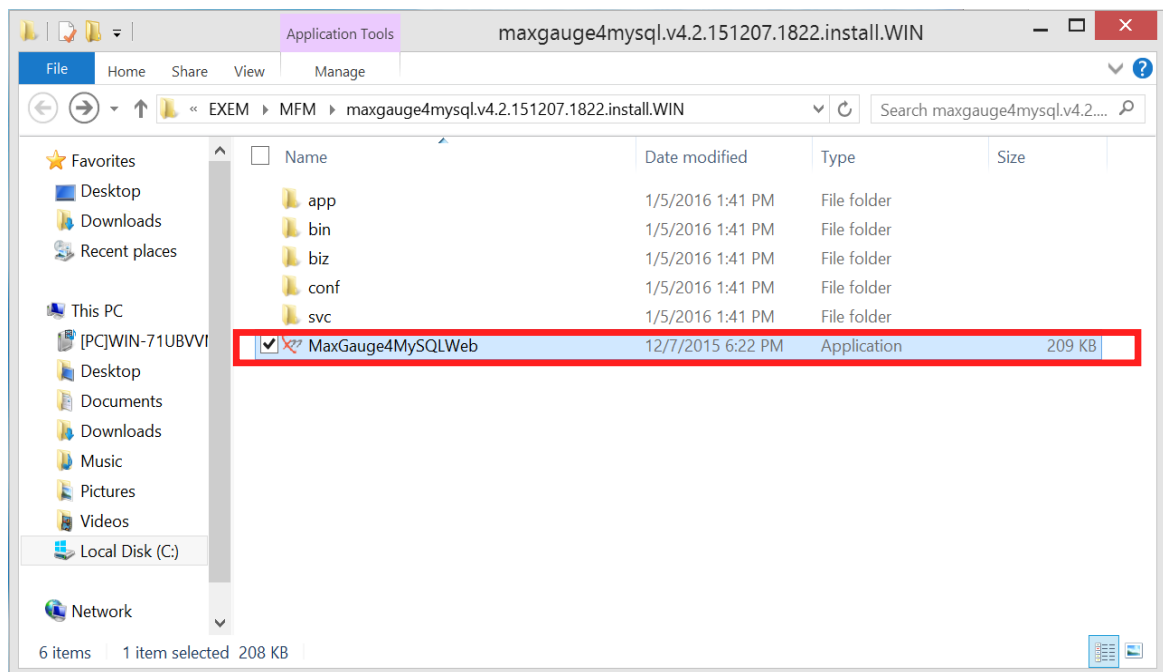
- Go to the license folder inside the conf folder.
- Upload the license file in the corresponding location.

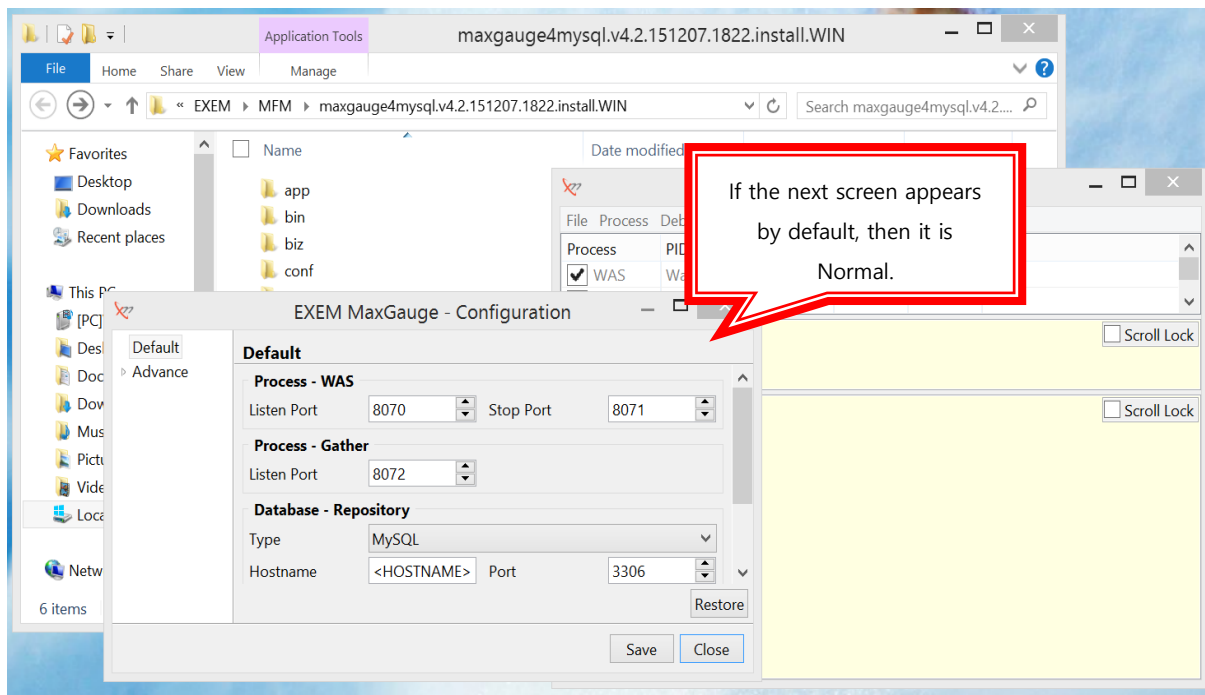




### MaxGauge4mysqlWeb.exe.Execution

- Execute Execution File (MaxGauge4MySQLWeb.exe)





## Environment configuration

- Enter Configuration's Logging PC Environment Variables

- Process - WAS

Listen Port : WAS Start Port / Web Connection (Default : 8070)

Stop Port : WAS Stop Port (Default : 8071)

- Process - Gather

Listen Port : Gather Start (Default : 8072)

- Database -Repository

Type : Select DB Type

Hostname : Enter Logging PC's IP

DB Name : Logging PC MySQL's DB Name for Maxgauge Data Collection

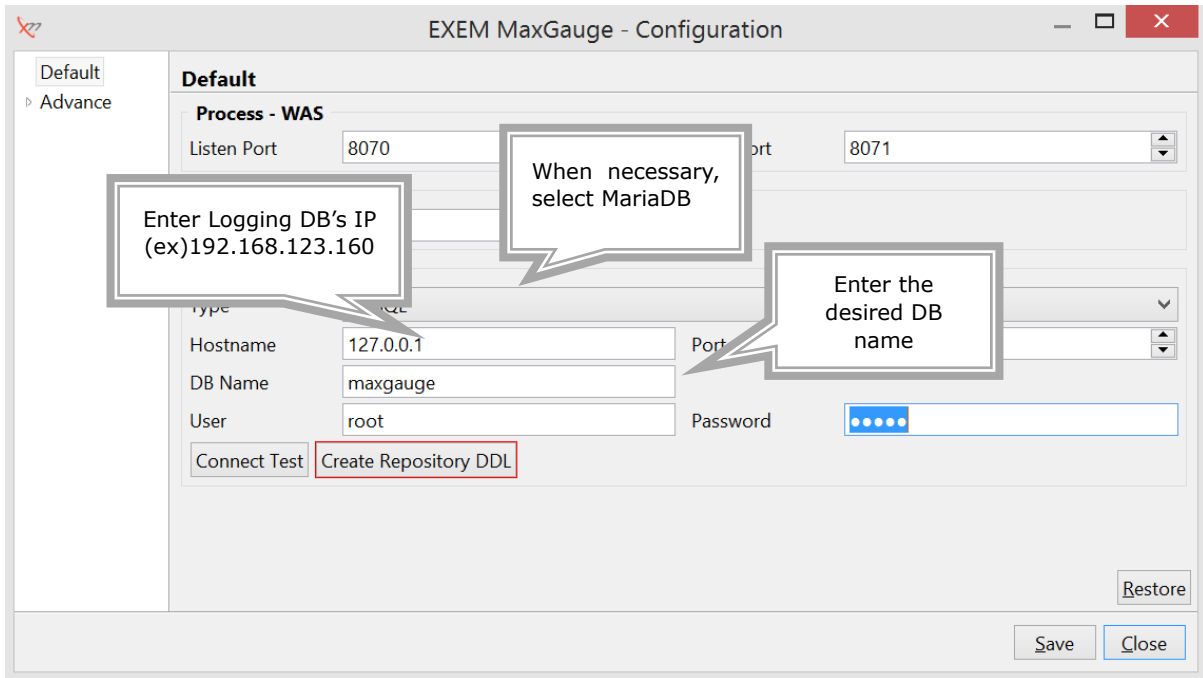
Once name is assigned, use the name you will enter in step 6) below to create DB and apply procedure.

( ex : MFM150413)

User : Logging PC MySQL's Login account

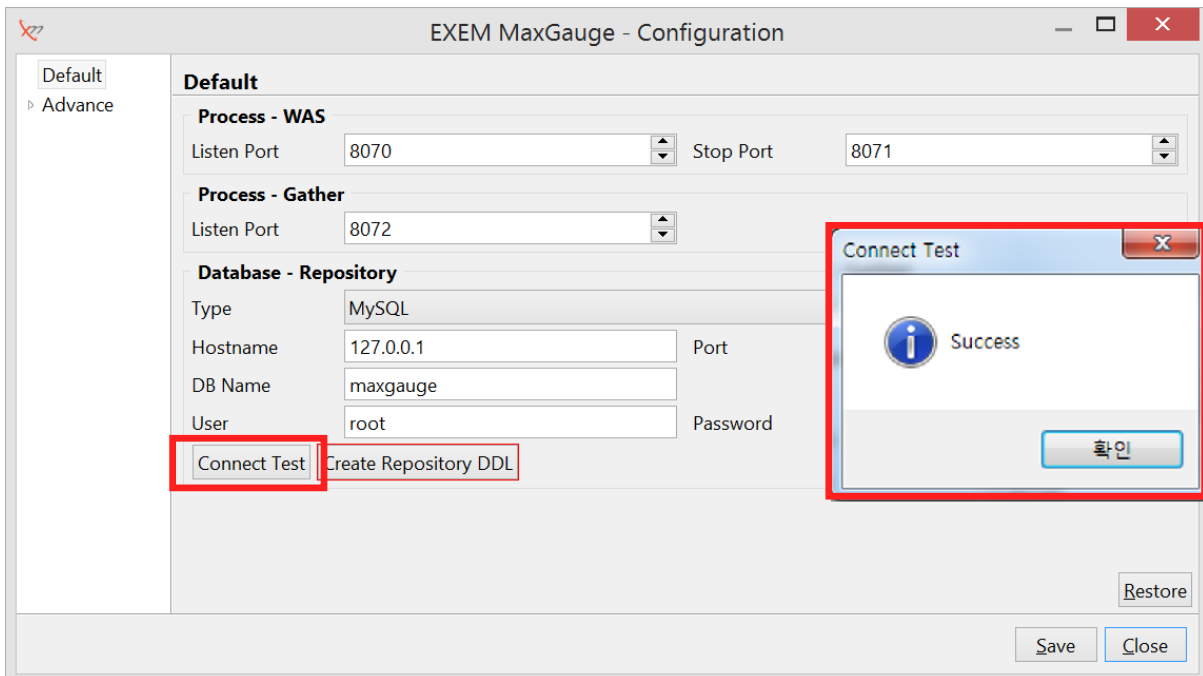
Password : Logging PC MySQL's Login Password





**Check the connection to Logging PC's MySQL.**

- Click the 'connect test' button at the bottom.
- If 'Success', then OK.



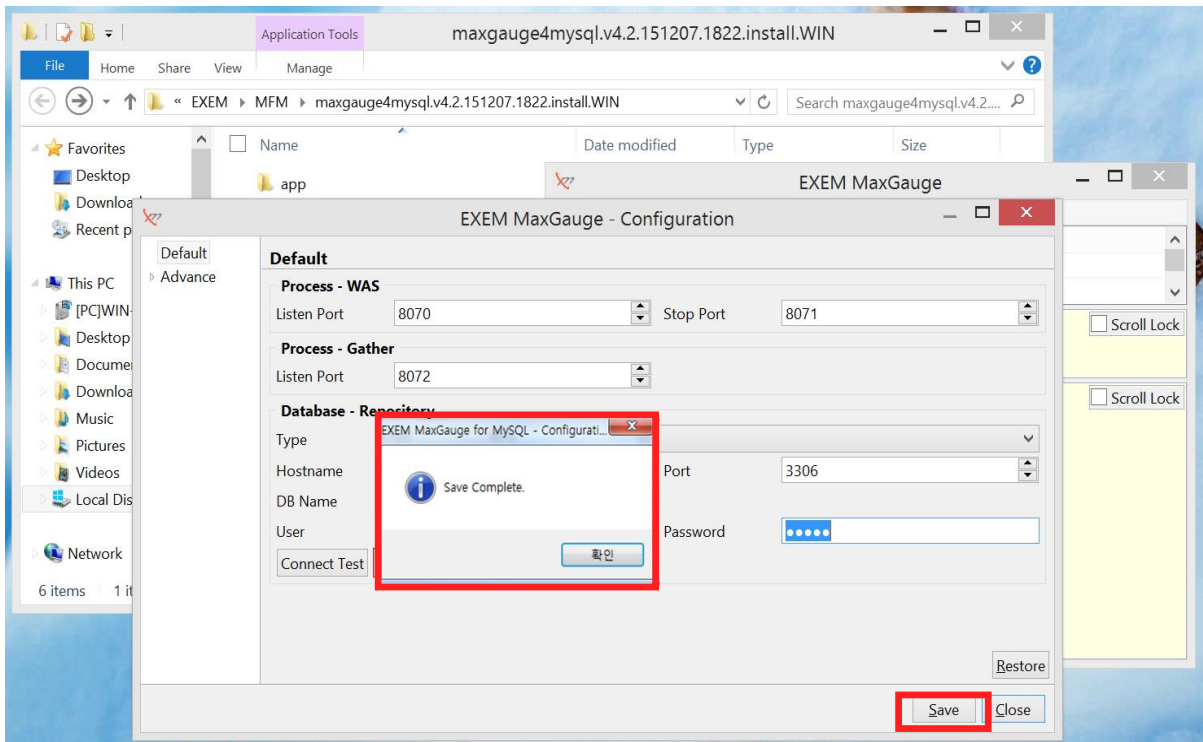
**Create DB and Procedure for MaxGauge in Logging PC's MySQL**

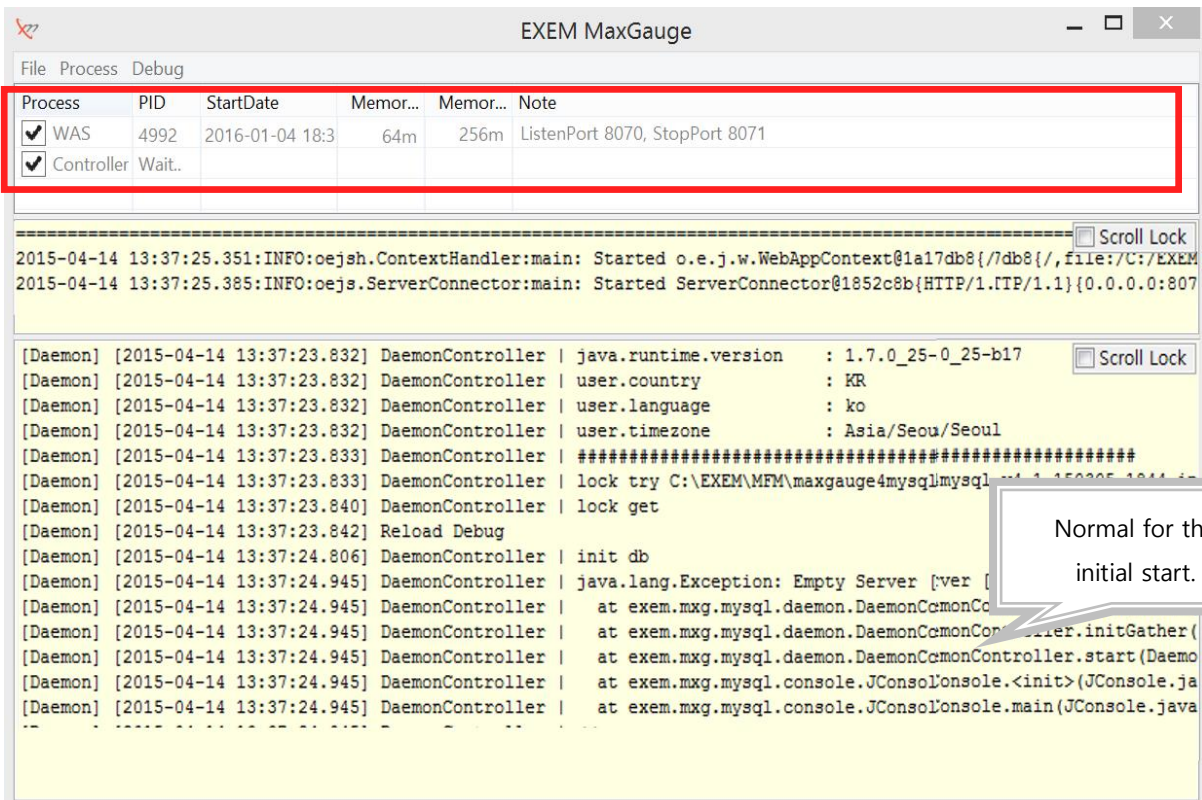
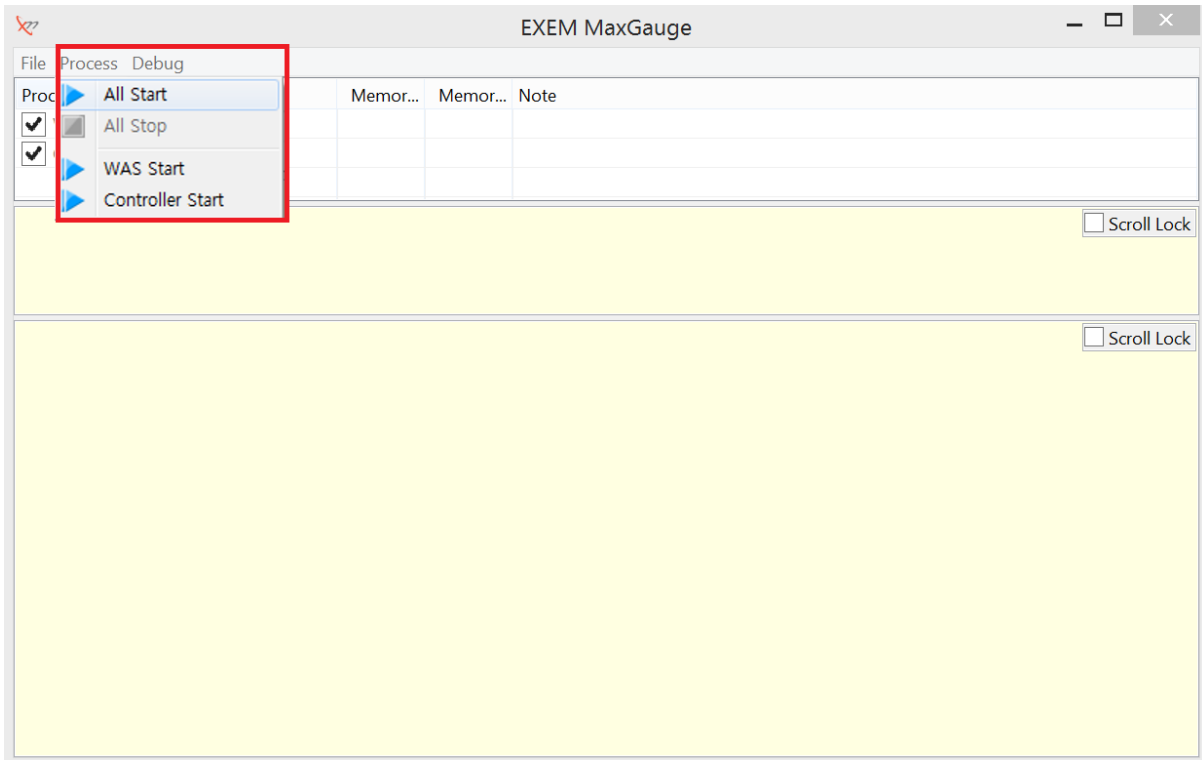
- Click the 'Create Repository DDL' button at the bottom.
- Once you click the button, the Cmd window will automatically open.

- Once creating DB and Procedure has been automatically processed, if the last 'Success' appears, it is normal.

### WAS, GATHER Execution

- ▪ Click the Save button to save the changes.
- ▪ From the Menu window, click Process > All start.
- When starting for the first time, gather will start but because there are no registered servers, it will shut down again. (Normal)

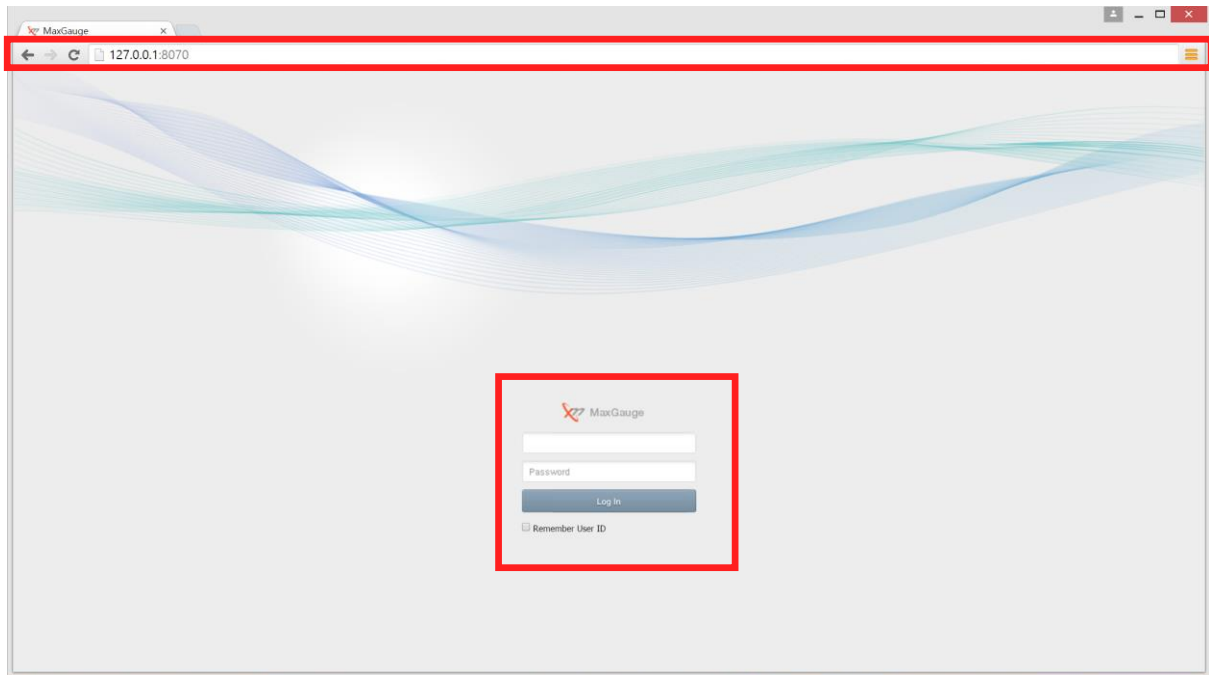




### Chrome Connection

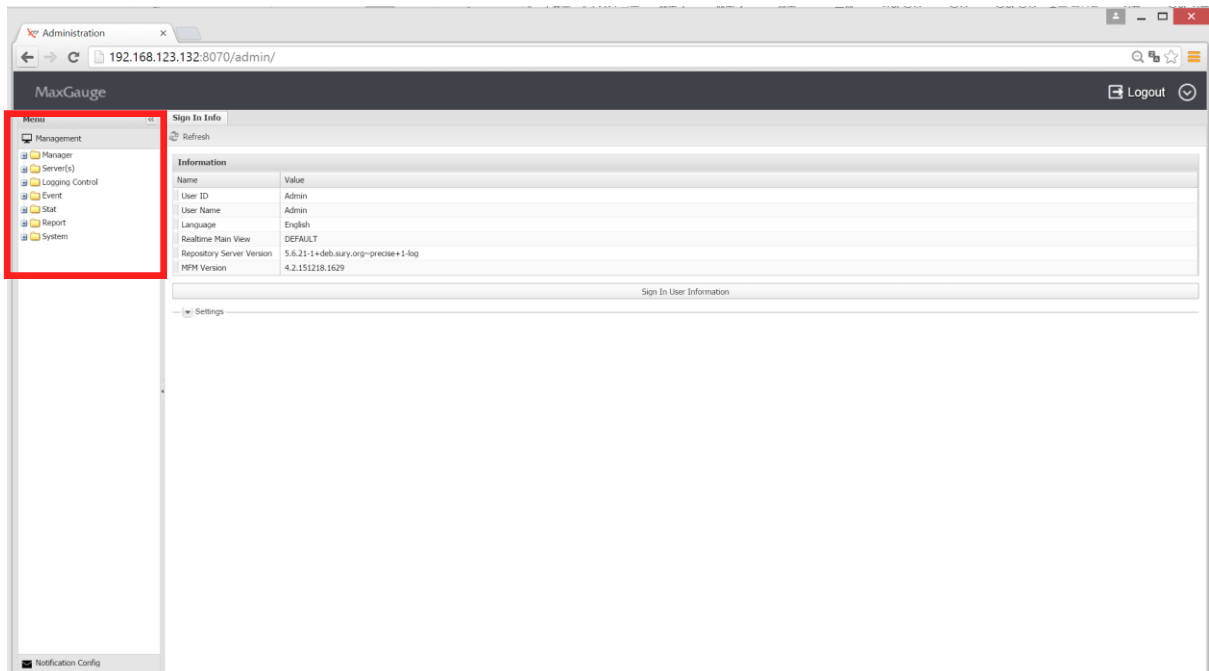
- IP Name : Connect to Chrome via the port.
- For first time login, the account/password is Admin/1.

- After login, you can change login information on Admin page.



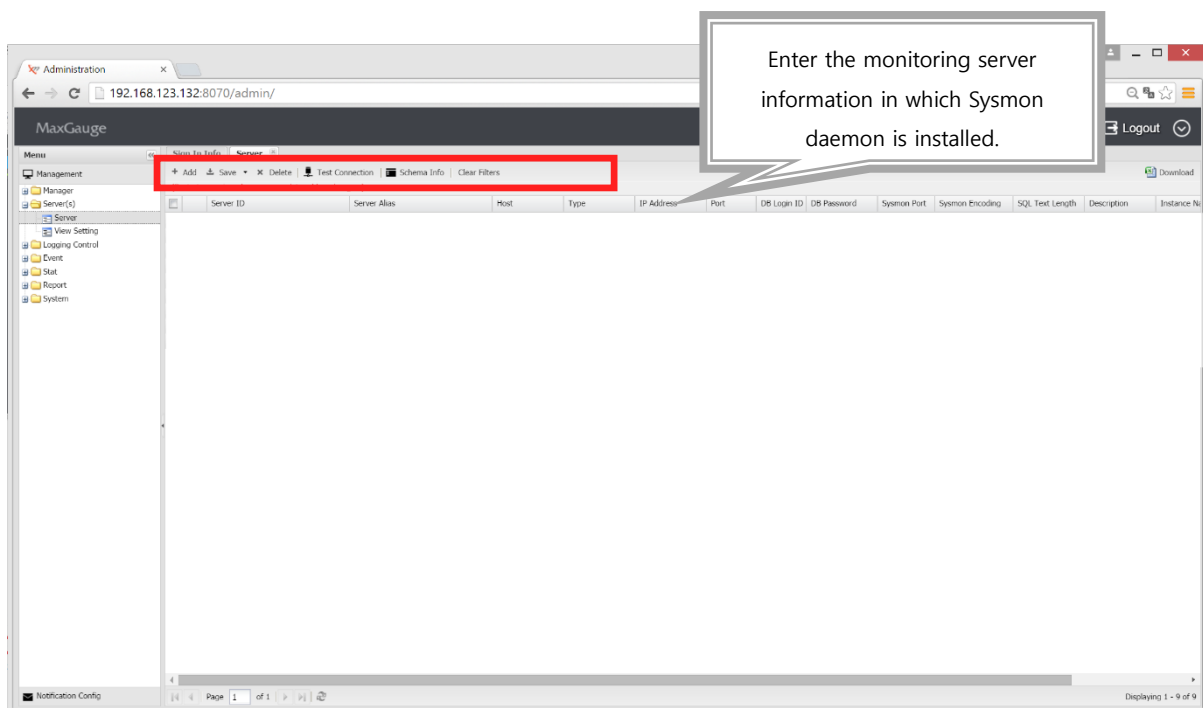
## Register Monitoring Server

- Go to Menu > Server > Server

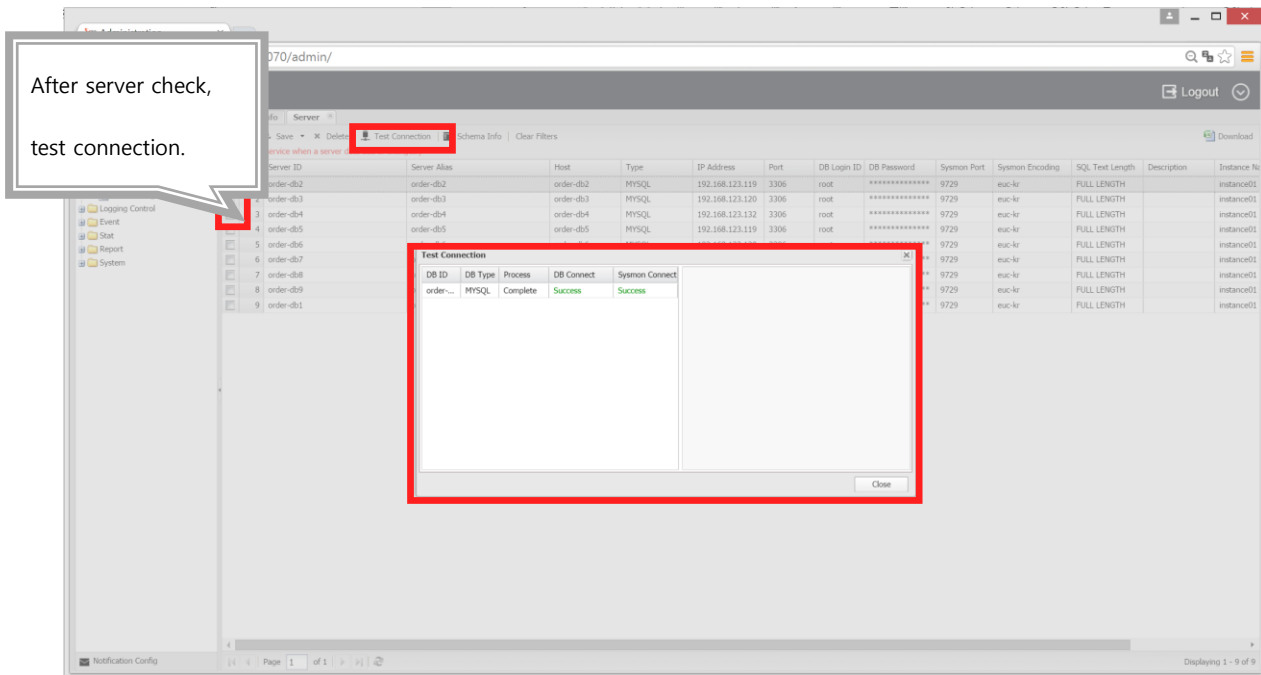


- Click the Add button, and enter the monitoring server information (server in which the daemon is installed)
  - Server ID : server name
  - Server Alias : When you register the server ID, it is automatically saved/ Changes are allowed.

- Type : Select DB
- IP Address : Enter Monitoring IP
- Port : Enter MySQL Port
- DB Login ID :
- DB Password :
- Sysmon Port : Enter Sysmon Connection Port (Default : 9729)
- System Encoding : Select Encoding
- SQL Text Length : Select SQL Text Length
- Instance Name : Sysmon Environment Configuration File Name (Default : Instance01)

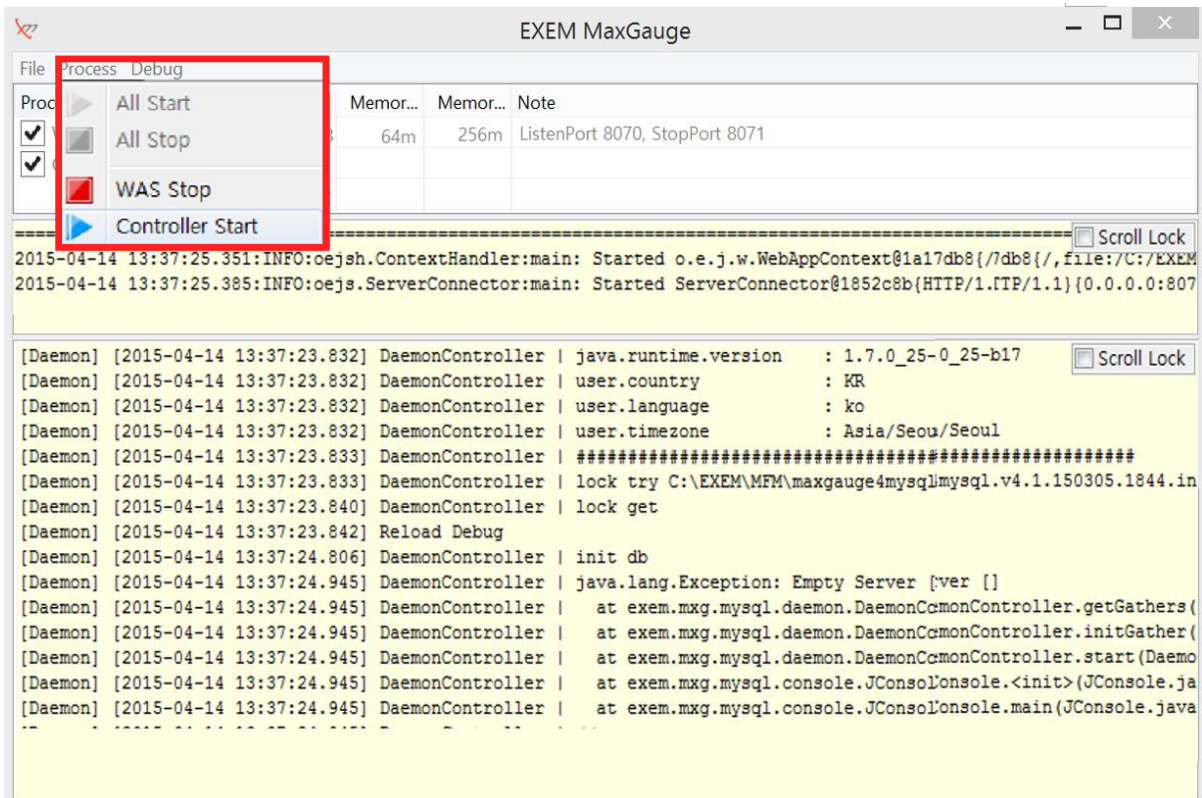


- Click the Save button, check the corresponding monitoring server, and click the Test Connection button – confirm 'Success'.
- (Note) Menu > Server > Server's Value Change -> Upon saving, you must restart Gather for changes to be applied.

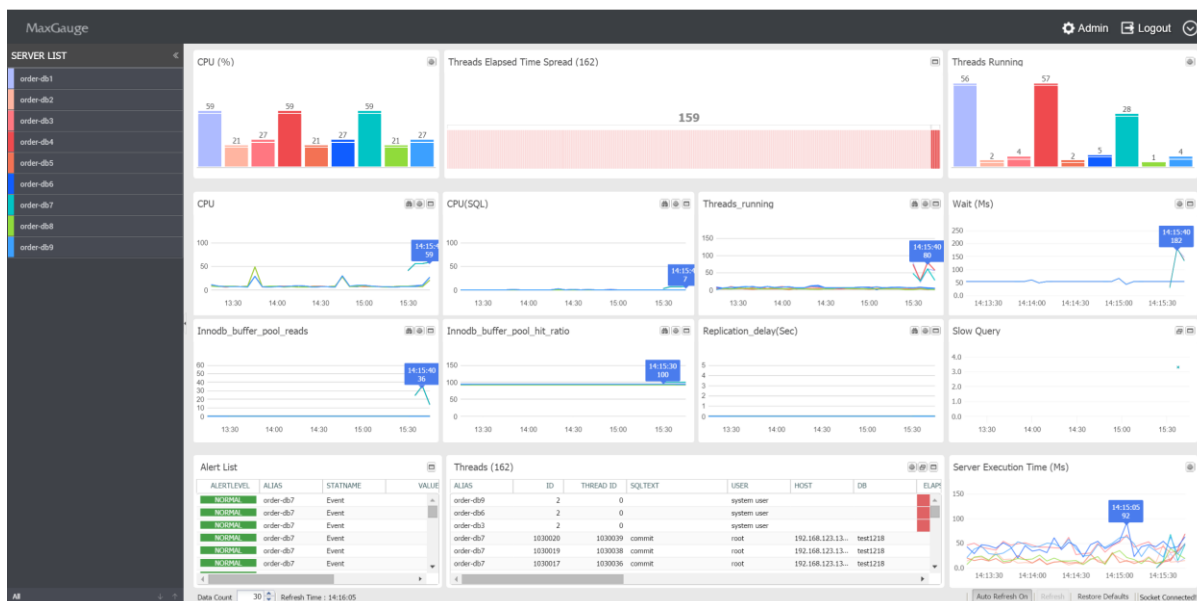


### Restart Gather

- Start Gather from Execution File (MaxGauge4MySQLWeb.exe)
- From Menu window, Process > Click Controller Start



## Start Monitoring



## Linux Version

### Install File Upload

- maxgauge4mysql.v4.2.151218.1629.install.LINUX.tar File Upload
- Upload file in install location.

```

-rw-rw-r-- 1 mysql mysql 16701 Mar 25 14:09 index.html
-rw-rw-r-- 1 mysql mysql 16702 Mar 25 14:10 index.html.1
-rw-rw-r-- 1 root root 3021 Mar 25 15:31 install.tar
-rw-rw-r-- 1 mysql mysql 486338560 Apr 21 20:09 maxgauge4mysql.v4.2.151218.1629.install.LINUX.tar.gz
-rw----- 1 mysql mysql 1877 Apr 1 10:26 .mysql_history
drwxrwxr-x 2 mysql mysql 4096 Apr 1 10:27 script
    
```

### Create directory to unzip files

- Create directory for Maxgauge For Mysql in the desired location by the administrator.
- Default : install directory location/maxgauge/
- Create maxgauge directory in the desired install location by the administrator.

```
mkdir maxgauge
```

- Create tmp directory inside the maxgauge directory.

```
cd maxgauge
```

```
mkdir tmp
```

```
[mysql@localhost maxgauge]$
[mysql@localhost maxgauge]$ pwd
/home/mysql/maxgauge
[mysql@localhost maxgauge]$ ls -al
total 475420
drwxrwxr-x 3 mysql mysql    4096 Apr 21 20:19 .
drwxr-xr-x 7 mysql mysql    4096 Apr 21 20:19 ..
-rw-rw-r-- 1 mysql mysql 486338560 Apr 21 20:09 maxgauge4mysql.v4.2.151218.1629.install.LINUX.tar
drwxrwxr-x 2 mysql mysql    4096 Apr 21 20:18 tmp
[mysql@localhost maxgauge]$
```

### Move the upload files to Install Path /maxgauge directory, and unzip

- Move the uploaded files to Install Path/maxgauge/ sysmon/bin/

```
mv maxgauge4mysql.v4.2.151218.1629.install.LINUX.tar Install Location/maxgauge/①
```

- Unzip

```
tar-xvf maxgauge4mysql.v4.2.151218.1629.install.LINUX.tar
```

```
[mysql@localhost maxgauge]$ pwd
/home/mysql/maxgauge
[mysql@localhost maxgauge]$ ls -al
total 475420
drwxrwxr-x 3 mysql mysql    4096 Apr 21 20:23 .
drwxr-xr-x 7 mysql mysql    4096 Apr 21 20:19 ..
-rw-rw-r-- 1 mysql mysql 486338560 Apr 21 20:09 maxgauge4mysql.v4.2.151218.1629.install.LINUX.tar
drwxrwxr-x 2 mysql mysql    4096 Apr 21 20:23 tmp
[mysql@localhost maxgauge]$ tar xvf maxgauge4mysql.v4.2.151218.1629.install.LINUX.tar
```

### Unzip and unzip the created x\_convert.tar file

- Unzip

```
1 tar-xvf x_convert.tar
```

```
[mysql@localhost maxgauge]$ pwd
/home/mysql/maxgauge
[mysql@localhost maxgauge]$ ls -al
total 475452
drwxrwxr-x 8 mysql mysql    4096 Apr 21 20:25 .
drwxr-xr-x 7 mysql mysql    4096 Apr 21 20:19 ..
drwxr-xr-x 6 mysql mysql    4096 Apr 7 17:57 app
drwxr-xr-x 5 mysql mysql    4096 Apr 21 20:25 bin
drwxr-xr-x 3 mysql mysql    4096 Apr 7 17:57 biz
drwxr-xr-x 8 mysql mysql    4096 Apr 7 17:57 conf
-rw-rw-r-- 1 mysql mysql 486338560 Apr 21 20:09 maxgauge4mysql.v4.2.151218.1629.install.LINUX.tar
drwxrwxr-x 3 mysql mysql    4096 Apr 21 20:25 svc
drwxrwxr-x 2 mysql mysql    4096 Apr 21 20:23 tmp
-rw-r--r-- 1 mysql mysql    10240 Apr 7 17:57 x_convert.tar
[mysql@localhost maxgauge]$ tar xvf x_convert.tar
```

### Move the zip file (Tar) to the directory created in step 2), maxgauge/tmp

- Move the zip files to tmp location created in step 2) so that version can be checked afterwards.
  - mv maxgauge4mysql.v4.1.151218.1629.install.LINUX.tar Install Location/maxgauge/tmp
  - mv x\_convert.tar Install Location/maxgauge/tmp

Or



- 1. mv maxgauge4mysql.v4.1.151218.1629.install.LINUX.tar tmp
- 2. mv x\_convert.tar tmp

```
[mysql@localhost maxgauge]$ pwd
/home/mysql/maxgauge
[mysql@localhost maxgauge]$ mv maxgauge4mysql.v4.2.151218.1629.install.LINUX.tar ../tmp
[mysql@localhost maxgauge]$ mv x_convert.tar ./tmp
[mysql@localhost maxgauge]$ cd tmp
[mysql@localhost tmp]$ ls -al
total 475428
drwxrwxr-x 2 mysql mysql 4096 Apr 21 20:29 .
drwxrwxr-x 9 mysql mysql 4096 Apr 21 20:29 ..
-rw-rw-r-- 1 mysql mysql 486338560 Apr 21 20:09 maxgauge4mysql.v4.2.151218.1629.install.LINUX.tar
-rw-r--r-- 1 mysql mysql 10240 Apr 7 17:57 x_convert.tar
[mysql@localhost tmp]$
```

### After moving to the unzipped x\_convert directory, run chmod,sh script

- Move to unzipped x\_convert directory

```
cd x_convert
```

- chmod.sh file execution (Automatic Granting Rights Shell Script)

```
./chmod.sh
```

- In the event of a bad interpreter while executing the shell script in the Install Location/maxgauge/bin directory, it returns an error!!

### Normal

```
[mysql@localhost maxgauge]$ pwd
/home/mysql/maxgauge
[mysql@localhost maxgauge]$ cd x_convert/
[mysql@localhost x_convert]$ pwd
/home/mysql/maxgauge/x_convert
[mysql@localhost x_convert]$ ls -al
total 24
drwxrwxr-x 3 mysql mysql 4096 Apr 28 2014 .
drwxrwxr-x 9 mysql mysql 4096 Apr 21 20:29 ..
-rwxr-xr-x 1 mysql mysql 200 Apr 28 2014 chmod.sh
drwxrwxr-x 2 mysql mysql 4096 Feb 25 2014 _res
-rwxr-xr-x 1 mysql mysql 187 Feb 25 2014 trans_crlf.sh
-rwxr-xr-x 1 mysql mysql 423 Apr 28 2014 trans_interpreter.sh
[mysql@localhost x_convert]$ ./chmod.sh
```

### When an Error Occurs

1. Go to x\_convert directory
2. Execute vi trans\_interpreter.sh -> Configure T\_INTERPRETER suitable to OS environment – Only ksh, bash
3. are acceptable.
4. ./trans\_interpreter.sh

```
[mysql@localhost x_convert]$ pwd
/home/mysql/maxgauge/x_convert
[mysql@localhost x_convert]$ vi trans_interpreter.sh
```

```

#T_INTERPRETER="#!/bin/ksh"
#T_INTERPRETER="#!/usr/bin/ksh"
#_INTERPRETER="#!/bin/bash"
#T_INTERPRETER=""

export T_INTERPRETER

#####

XM_EXECUTE_HOME=`cd $(dirname $0); pwd`
cd $XM_EXECUTE_HOME

mkdir -p _bak/interpreter

find ../bin/ -name "*.sh" -type f -exec ./_res/interpreter.sh {} ";";

if [ -f tmp.interpreter ]; then
    rm tmp.interpreter
fi

[mysql@localhost x_convert]$ pwd
/home/mysql/maxgauge/x_convert
[mysql@localhost x_convert]$ vi trans_interpreter.sh
[mysql@localhost x_convert]$ ./trans_interpreter.sh

```

## WAS Environment Configuration

### 1. Config.sh

- Go to Install Location/maxgauge/bin/  
cd Install Location/maxgauge/bin
- Change config.sh Configuration  
vi config.sh

### 2. System.properties

- Go to Install Location/maxgauge/conf/properties  
cd Install Location/maxgauge/conf/properties
- Change system.properties Configuration

vi system.properties

```

[mysql@localhost properties]$ pwd
/home/mysql/maxgauge/conf/properties
[mysql@localhost properties]$ ls -al
total 24
drwxr-xr-x 2 mysql mysql 4096 Apr 21 20:25 .
drwxr-xr-x 8 mysql mysql 4096 Apr 7 17:57 ..
-rw-r--r-- 1 mysql mysql 1260 Apr 7 17:57 daemon.properties
-rw-r--r-- 1 mysql mysql 1270 Apr 7 17:57 dbpool.properties
-rw-r--r-- 1 mysql mysql 709 Apr 7 17:57 system.properties
-rw-r--r-- 1 mysql mysql 100 Apr 7 17:57 version.properties
[mysql@localhost properties]$ vi system.properties

```

## System.properties

```
##### Socket Info#####
socket.ip      = localhost
socket.port    = 8070
socket.context = /ws

##### Web Socket #####
websocket.compress      = false
websocket.idle_timeout  = 300000
websocket.max_message_size = 524288
#websocket.max_message_size = 262144 -- [Fail]
#websocket.max_message_size = 131072 -- [Fail]
#websocket.max_message_size = 65536 -- [Fail] active session...
#websocket.max_message_size = 2147483647 -- max
websocket.sqltext.len = 30

##### sysmon #####
sysmon.timeout.connect = 3
sysmon.timeout.read    = 4
sysmon.cache.continuous = 2
```

## Gather Environment Configuration

1. Daemon.properties

- Go to Install Location/maxgauge/conf/properties

cd Install Location/maxgauge/conf/properties

- Change daemon.properties Configuration

vi daemon.properties

```
[mysql@localhost properties]$ pwd
/home/mysql/maxgauge/conf/properties
[mysql@localhost properties]$ ls -al
total 24
drwxr-xr-x 2 mysql mysql 4096 Apr 21 20:56 .
drwxr-xr-x 8 mysql mysql 4096 Apr 7 17:57 ..
-rw-r--r-- 1 mysql mysql 1260 Apr 7 17:57 daemon.properties
-rw-r--r-- 1 mysql mysql 1270 Apr 7 17:57 dbpool.properties
-rw-r--r-- 1 mysql mysql 709 Apr 7 17:57 system.properties
-rw-r--r-- 1 mysql mysql 100 Apr 7 17:57 version.properties
[mysql@localhost properties]$ vi daemon.properties
```

## Daemon.properties

```
daemon.port      = 8072
daemon.logview.data = false

daemon.container.initial.data = true
daemon.container.active_session.sender.lc = true
daemon.container.active_session.sender.rtm = true
daemon.container.event_list.sender.lc = true
daemon.container.event_list.sender.rtm = true
daemon.container.sys_stat.receiver.sysmon = true
daemon.container.sys_stat.sender.lc = true
daemon.container.sys_stat.sender.rtm = true
daemon.container.wait_stat.sender.lc = true
daemon.container.wait_stat.sender.rtm = true
daemon.container.slow_query.sender.lc = true
daemon.container.slow_query.sender.rtm = true
daemon.container.dead_lock.sender.lc = true
daemon.container.innodb.sender.lc = true
daemon.container.lock_tree.sender.lc = true
daemon.container.process_list.sender.lc = true
daemon.container.df.sender.lc = true
daemon.container.fixed.sender.lc = true

daemon.factory.alert.rtm = true
daemon.factory.alert.lc = true

#####
# Extension
#####
extension.active = false
extension.0 = ext.test.Alert
```

## Repository DB Environment Configuration

### 1. dbpool.properties

- Go to Install Location/maxgauge/conf/properties

cd Install Location/maxgauge/conf/properties

- Change dbpool.properties Configuration

vi dbpool.properties

```
[mysql@localhost properties]$ pwd
/home/mysql/maxgauge/conf/properties
[mysql@localhost properties]$ ls -al
total 24
drwxr-xr-x 2 mysql mysql 4096 Apr 21 20:58 .
drwxr-xr-x 8 mysql mysql 4096 Apr 7 17:57 ..
-rw-r--r-- 1 mysql mysql 1260 Apr 7 17:57 daemon.properties
-rw-r--r-- 1 mysql mysql 1270 Apr 7 17:57 dbpool.properties
-rw-r--r-- 1 mysql mysql 709 Apr 7 17:57 system.properties
-rw-r--r-- 1 mysql mysql 100 Apr 7 17:57 version.properties
[mysql@localhost properties]$ vi dbpool.properties
```

※ Different configuration method is used for each MySQL and MariaDB and therefore, please reference the following information.

### dbpool.properties(When installing on MySQL)

```
manager.logging=true
manager.pool_type=bonecp
```

```
#####
# EXEM MFS for web
#####
mydb.driver = com.mysql.jdbc.Driver
mydb.url = jdbc:mysql://192.168.100.141:3306/exem
mydb.user = 74e586bf3478f174fe1b5d816be18436
mydb.password = 74e586bf3478f174fe1b5d816be18436
mydb.connectTimeout = 3
mydb.readTimeout = 30
mydb.loginTimeout = 1
mydb.testQuery = SELECT 1
mydb.minConnectionsPerPartition = 3
mydb.maxConnectionsPerPartition = 30
mydb.partitionCount = 1

#####
# Dynamic / Instance
#####
# Do not create 'dynamic.instance.driver'
dynamic.instance.connectTimeout = 3
dynamic.instance.readTimeout = 30
dynamic.instance.loginTimeout = 1
dynamic.instance.testQuery = SELECT 1
dynamic.instance.minConnectionsPerPartition = 3
dynamic.instance.maxConnectionsPerPartition = 30
dynamic.instance.partitionCount = 1
```

※ Check the results values of mydb.url and mydb.password in the following path and enter the information.

```
[mysql@localhost bin]$ pwd
/home/mysql/maxgauge/bin
[mysql@localhost bin]$ ./jconsole.encrypt.sh
Input String(Enter to quit) > 74e586bf3478f174fe1b5d816be18436
Input String(Enter to quit) >
```

Ex.) input String (Enter to quit) > root -> Enter user / password

input String (Enter to quit) > 74e586bf3478f17f4e1..... -> Outputs the result value accordingly.

### **dbpool.properties(When installing on MariaDB)**

```

manager.logging=true
manager.pool_type=bonecp

#####
# EXEM MFS for web
#####
mydb.driver = com.mysql.jdbc.Driver
mydb.url = jdbc:mysql://192.168.100.141:3306/exem
mydb.user = root@192.168.100.141
mydb.password = 74e586b8f174fe1b5d816be18436
mydb.connectTimeout = 3
mydb.readTimeout = 30
mydb.loginTimeout = 1
mydb.testQuery = SELECT 1
mydb.minConnectionsPerPartition = 3
mydb.maxConnectionsPerPartition = 30
mydb.partitionCount = 1

#####
# Dynamic / Instance
#####
# Do not create 'dynamic.instance.driver'
dynamic.instance.connectTimeout = 3
dynamic.instance.readTimeout = 30
dynamic.instance.loginTimeout = 1
dynamic.instance.testQuery = SELECT 1
dynamic.instance.minConnectionsPerPartition = 3
dynamic.instance.maxConnectionsPerPartition = 30
dynamic.instance.partitionCount = 1
    
```

Insert license

- Go to Install Location/maxgauge/conf/license  
cd Install Location/maxgauge/conf/license
- Upload the license file in the corresponding location.

```

[mysql@localhost license]$ pwd
/home/mysql/maxgauge/conf/license
[mysql@localhost license]$ ls -al
total 16
drwxr-xr-x 3 mysql mysql 4096 Apr 21 21:07 .
drwxr-xr-x 8 mysql mysql 4096 Apr 7 17:57 ..
-rw-rw-r-- 1 mysql mysql 2033 Apr 21 21:07 license.TRIAL_20150630.mfm.key
drwxr-xr-x 2 mysql mysql 4096 Apr 21 20:25 module
[mysql@localhost license]$
    
```

### **Creating Repository DB and Procedure**

- Go to Install Location/maxgauge/bin/install  
cd Install Location/maxgauge/bin/install
- •Execute install.sh file (Automatic install shell script)  
./install.sh

```

[mysql@localhost install]$ pwd
/home/mysql/maxgauge/bin/install
[mysql@localhost install]$ ls -al
total 12
drwxr-xr-x 2 mysql mysql 4096 Apr 21 20:25 .
drwxr-xr-x 5 mysql mysql 4096 Apr 21 20:54 ..
-rwx----- 1 mysql mysql 495 Apr 21 20:48 install.sh
[mysql@localhost install]$ ./install.sh
    
```

※ When completed successfully, it will display the message, InstallDDL Result : Success

### Process Start, End

- Go to Install Location/maxgauge/bin  
cd Install Location/maxgauge/bin
- Process Execution (Automatic Install Shell Script)  
WAS Start : ./bin/jetty.start.sh  
WAS End : ./bin/jetty.stop.sh  
Gather Start : ./bin/daemon.start.sh  
Gather End : ./bin/daemon.stop.sh  
All Start : ./bin/all.start.sh  
All End : ./bin/all.stop.sh

### WAS Start

```
[mysql@localhost bin]$ pwd
/home/mysql/maxgauge/bin
[mysql@localhost bin]$ ./jetty.start.sh
Waiting startup Process ..
Process Owner PID Command
Jetty mysql 9344 -DXM_SVC=exem_MFM_1b7228318b92c12418b78e9bdc06132f_jetty -Xms64m -Xmx256m -Djetty.port
[mysql@localhost bin]$ ./jetty.stop.sh
Waiting shutdown Process ...
Process Owner PID Command
Jetty Shutdown !!!!!
```

### Gather Star

```
[mysql@localhost bin]$ pwd
/home/mysql/maxgauge/bin
[mysql@localhost bin]$ ./daemon.start.sh
Waiting startup Process ..
Process Owner PID Command
Daemon mysql 9699 -DXM_SVC=exem_MFM_1b7228318b92c12418b78e9bdc06132f_daemon -Xms8m -Xmx32m
[mysql@localhost bin]$ ./daemon.stop.sh
Not Running Process =====
Process Owner PID Command
Daemon Shutdown !!!!!
```

### All Start

```
[mysql@localhost bin]$ pwd
/home/mysql/maxgauge/bin
[mysql@localhost bin]$ ./all.start.sh

Waiting startup Process ..

Process Owner PID Command
Jetty mysql 10040 -DXM_SVC=exem_MFM_1b7228318b92c12418b78e9bdc06132f_jetty -Xms64m -Xmx256m -Djetty.port

Waiting startup Process ..

Process Owner PID Command
Daemon mysql 10305 -DXM_SVC=exem_MFM_1b7228318b92c12418b78e9bdc06132f_daemon -Xms8m -Xmx32m

[mysql@localhost bin]$ ./all.stop.sh

Not Running Process

Process Owner PID Command
Daemon Shutdown !!!!!

Waiting shutdown Process ...

Process Owner PID Command
Jetty Shutdown !!!!!
```

### Process Status Check

- Go to Install Location/maxgauge/bin  
cd Install Location/maxgauge/bin
- Process Execution (Automatic Install Shell Script)
  - ① Status Check : ./bin/all.ps.sh

### Status Check

```
[mysql@localhost bin]$ pwd
/home/mysql/maxgauge/bin
[mysql@localhost bin]$ ./all.ps.sh

Process Owner PID Command
Jetty mysql 10760 -DXM_SVC=exem_MFM_1b7228318b92c12418b78e9bdc06132f_jetty -Xms64m -Xmx256m -Djetty.port
Daemon Shutdown !!!!!
```

※ When activating daemon for the first time, because it is not yet registered in the server, its status will appear as 'shutdown'.

Follow the same configuration steps from section 3.6, step 9). ( Please see p.21 ~ p.23 of this document.)

### After daemon has started, status check

```
[mysql@localhost bin]$
[mysql@localhost bin]$ ./daemon.start.sh

Waiting startup Process ..

Process Owner PID Command
Daemon mysql 11815 -DXM_SVC=exem_MFM_1b7228318b92c12418b78e9bdc06132f_daemon -Xms8m -Xmx32m

[mysql@localhost bin]$ ./all.ps.sh

Process Owner PID Command
Jetty mysql 10760 -DXM_SVC=exem_MFM_1b7228318b92c12418b78e9bdc06132f_jetty -Xms64m -Xmx256m -Djetty.
Daemon mysql 11815 -DXM_SVC=exem_MFM_1b7228318b92c12418b78e9bdc06132f_daemon -Xms8m -Xmx32m
Gather 0 mysql 12122 -DXM_SVC=exem_MFM_1b7228318b92c12418b78e9bdc06132f_gather_0 -Xms64m -Xmx384m
```

**To find out more about  
MaxGauge or If you have  
interesting about this product,  
contact MaxGauge.**

-----  
[www. MaxGauge.com](http://www.MaxGauge.com)

**TEL : 714-855-3981**

**E-MAIL : [sales@maxgauge.com](mailto:sales@maxgauge.com)**

**ADDRESS : 20280 S Vermont Ave Suite200  
Torracne, CA 90502, USA**

### **ABOUT US**

MaxGauge, INC is a solution based technology company that has been providing database optimization and tuning services since 2001 with our software solution. We have served 450 clients across a wide range of industries including finance, manufacturing, government, healthcare, telecommunication, etc.